

# New Corsa

2011 Models Edition 1



Proud Sponsor of Home Nations Football





## Contents

Exterior style	06	Driving dynamics	18	Accessories	38
Interior style	08	Safety and security	20	VXR Styling	40
Limited Edition	10	Clever solutions	22	Corsa VXR	42
Linea Stripes Pack	12	Comfort equipment	24	Colours and trims	46
Environment	14	Infotainment	26	Wheels and tyres	50
Engines and transmissions	16	Model line-up	28	Equipment and technical data	52

*This brochure covers New Corsa Expression, S, Exclusiv, SE, SXi, Limited Edition and SRi models only. Some of the models shown include options and accessories available at extra cost. And not all of the features described are available on every model. So please check in the Equipment section for further details. Note: some of the vehicles illustrated may not be to final UK specification.*





Please see back cover for more details.



## New Corsa. Put the fun back into driving.

Get yourself into a New Corsa. And get a lot more fun out of life. With stunning new styling, funky new colours and brilliant attention to detail, inside and out. A dynamic chassis and punchy petrol or diesel engines. Plus, bags of clever features. It can only make life better. Wherever you go. Whatever's in store for you.





*Dark-tinted rear windows, Adaptive Forward Lighting and 17-inch alloy wheels are optional at extra cost.*



## New Corsa. Check the style.

New Corsa looks brilliant from every angle. The seriously sporty three-door, sharp and dynamic with real attitude. And the flexible five-door – maybe a little more grown-up, but ever so versatile and wonderfully well proportioned.





*Dark-tinted rear windows, 17-inch alloy wheels and two-coat pearlescent paint are optional at extra cost.*



## New Corsa. The inside story.

On the inside, we've got sharp new fabrics, contemporary interior detailing and an optional intuitive touch-screen navigation system complete with USB connection and Bluetooth® facility. Every model has its own unique personality, so all you have to do is choose the one that matches yours.





*Corso SE model illustrated. Touch and Connect satellite navigation system is optional at extra cost.*

## Why blend in when you can stand out?

New Corsa Limited Edition – you don't look this sharp by chance. You need New Corsa's natural style, a whole lot of attitude, and the full VXR Styling Pack including a front lower spoiler, side sills, rear roof spoiler and rear lower skirt. Colour it all red, white or yellow. Add black details and roof. Match it with black 17-inch twin-spoke alloy wheels and you can see the results for yourself.









## New Corsa. Get yourself noticed.

Want your New Corsa to really stand out from the crowd? Then choose an Exclusiv, SXi or SRi and check out the optional Linea Stripes Pack. Unique to these models, it also includes white 17-inch alloy wheels and white door mirrors. Now that should get you noticed!





*Corsa SXi model illustrated. Linea Stripes Pack and two-coat pearlescent paint are optional at extra cost.*

# Respect your world.

We all share a responsibility to look after our world. That's why Vauxhall has been at the forefront of green automotive initiatives for many years. Of course, we are always looking to further reduce vehicle CO<sub>2</sub> emissions and our ecoFLEX models already have some of the lowest emissions in the UK. And the introduction of our new Start/Stop models, producing as low as 94g/km of CO<sub>2</sub>, further underlines our commitment to the environment.

Most recently, we have been researching ways of developing new cars that are even more efficient than ever before. The forthcoming Vauxhall Ampera\* is an Extended-Range Electric Vehicle (E-REV) that can drive up to 50 miles on battery power alone and over 300 miles utilising an on-board electric generator system.

But our commitment to the environment goes even further. We have dramatically reduced manufacturing emissions, and our new models use more recycled materials and more recyclable parts than ever before.

We also offer free and easily accessible, environmentally friendly, end-of-life vehicle disposal through our partners Autogreen Ltd. That way, we reduce our environmental impact in every phase of every vehicle's life cycle. Because your world is our world, too.



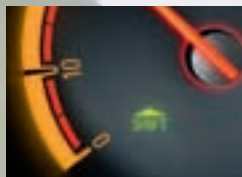
\*For more information on Vauxhall Ampera please visit [www.vauxhallampera.co.uk](http://www.vauxhallampera.co.uk)  
Model illustrated features 17-inch alloy wheels, Adaptive Forward Lighting and dark-tinted rear windows optional at extra cost.







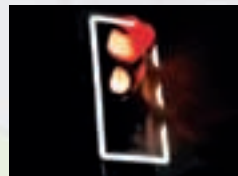
Corsa's range of ecoFLEX engines have been designed to save you money whilst not compromising performance and driveability. The benefit of improved fuel economy speaks for itself but lower CO<sub>2</sub> emissions also mean Vehicle Excise Duty (VED) savings and lower company car taxation too. Take a look at the table below for all the information.



**Shift-up indicator.** Standard on all models in the New Corsa line-up. The shift-up indicator light on the rev counter illuminates, alerting the driver to the optimum time a gear change is required. A valuable aid designed to further enhance fuel efficiency.

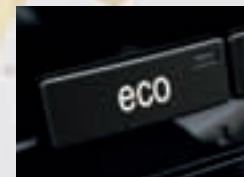
**Petrol engines.** New Corsa models are available with three, Euro 5 compliant petrol engines – the 1.0i 12v ecoFLEX, the 1.2i 16v VVT and a 1.4i 16v VVT – combining power and fuel efficiency with low CO<sub>2</sub> emissions.

**ecoFLEX turbo diesels.** New Corsa's Euro 5 diesel engine range – a powerful 130PS 1.7CDTi 16v and a choice of efficient 1.3CDTi 16v units (75PS and 95PS) – combine performance, refinement and efficiency, offering superb environmental credentials. In addition, all New Corsa diesel models qualify for zero VED\* in the first year.



**Start/Stop technology.** The New Corsa ecoFLEX Start/Stop models switch the engine off when you stop at the lights or in traffic, then restart it automatically once the clutch is depressed, saving fuel and reducing emissions even further. The AUTOSTOP symbol housed within the rev counter indicates that the engine has stopped.

The system can be deactivated manually by simply pressing the ECO button on the fascia. As the chart below shows, the New Corsa 1.3CDTi 16v (75PS) Start/Stop model cuts CO<sub>2</sub> emissions considerably and improves fuel economy by as much as 4.9% over the non-Start/Stop version. The 1.3CDTi 16v (95PS) Start/Stop engine reinforces Vauxhall's eco commitment even further, increasing fuel economy over the non-Start/Stop 75PS models by an incredible 19.9% (3-door). In addition, both Start/Stop engines cut CO<sub>2</sub> by so much that they qualify for zero Vehicle Excise Duty\* (VED) in the first year and the 95PS version for the life of the vehicle\*.



**Transmissions.** The 1.3CDTi 16v (95PS) SE and SXi plus 1.7CDTi 16v SE and SRi diesel models come with a six-speed manual gearbox. The rest of the range comes with a five-speed manual as standard, with sophisticated four-speed automatic (1.4i 16v) and five-speed Easytronic (1.2i 16v) transmission models also available.

	Combined fuel economy mpg (litres/100km)	CO <sub>2</sub> emissions (g/km)	VED (2010/11)*		Benefit in kind tax band† (2010/11 tax year)
			First year	Standard	
<b>Petrol</b>					
1.0i 12v ecoFLEX	56.5 (5.0)	117	£0	£30	10%
1.2i 16v VVT	53.3 (5.3)	124	£0	£90	15%
1.2i 16v VVT ecoFLEX Easytronic	55.4 (5.1)	119	£0	£30	10%
1.4i 16v VVT	49.6 (5.7)	134	£110	£110	15%
1.4i 16v VVT automatic 3-door/5-door	46.3 (6.1)/44.8 (6.3)	143/147	£125	£125	17%/18%
<b>Diesel</b>					
1.3CDTi 16v (75PS) ecoFLEX 3-door/5-door	67.3 (4.2)	110/112	£0	£20/£30	13%
1.3CDTi 16v (75PS) ecoFLEX S/S	70.6 (4.0)	105	£0	£20	13%
1.3CDTi 16v (95PS) ecoFLEX	64.2 (4.4)	115	£0	£30	13%
1.3CDTi 16v (95PS) ecoFLEX S/S 3-door/5-door	80.7 (3.5)/78.5 (3.6)	94/95	£0	£0	13%
1.7CDTi 16v ecoFLEX 3-door/5-door	62.8 (4.5)/61.4 (4.6)	118/119	£0	£30	13%

S/S = Start/Stop. \*Correct at time of publication (January 2011). †Taxation information for guidance only. Please take professional advice on your own tax position.





**Easytronic.**  
Choose New  
Corsa's optional  
Easytronic  
transmission

and you'll get a five-speed manual gearbox with a fully automatic mode. In manual mode, you push the lever forward or back to shift gears up or down and by nudging the lever to the side you switch to fully automatic mode. There's no clutch pedal so you can drive it on an automatic-only driving licence.

**Vauxhall Lifetime Warranty.** We're so confident in our quality and reliability that we are able to offer a warranty\*\* that could last a Lifetime! Available to the first owner of all New Corsa models, it's valid for the lifetime of the vehicle up to a maximum of 100,000 miles. Please see back cover for more details.



\*\*Vauxhall Lifetime Warranty covers lifetime ownership of first car owner; 100,000 mile limit; annual check required. Terms and conditions apply. For more information visit [www.vauxhall.co.uk/warranty](http://www.vauxhall.co.uk/warranty)

**A sense of fun.** Okay, we could tell you that the Corsa chassis has been designed to ensure pure driving pleasure without ever compromising ride comfort. But wouldn't it be better to discover how much fun it is to drive by trying it for yourself?

**Dynamic chassis system.** The Corsa Chassis features optimised spring, damper and anti-roll bar settings to combine serious ride comfort with real agility and is equally at home around the city streets or out on the open road. The advanced Anti-lock Braking System (ABS) combines with other chassis safety features to improve stability and steering behaviour in a range of emergency situations. Corsa, serious fun and peace of mind whatever the driving conditions.



**ABS and ESP-plus.** Corsa's Anti-lock Braking System (ABS) includes safety features like Straight Line Stability control and Cornering Brake Control as standard. Electronic Stability Programme-plus (ESP-plus) is optional on all models. Turn to the Technical data section for more details.



**Speed-sensitive power assisted steering.** With Corsa's power steering, it's easier to turn the wheel when negotiating those tight parking spaces around town, but more stable, with more feedback, once you're out on the open road. Less stress, more driving pleasure.



**Sporty models.** Choose the Limited Edition or SRi and you will also enjoy a lower ride height, and sportier spring and damper settings, plus progressive rate, variable ratio power-steering for an even more dynamic driving sensation.



*SXi model illustrated features 17-inch alloy wheels, Adaptive Forward Lighting, VXR Styling Pack and two-coat metallic paint optional at extra cost.*







*Model illustrated features 17-inch alloy wheels and Adaptive Forward Lighting optional at extra cost.*



**Intelligent safety.** Our safety features are almost taken for granted nowadays, but it doesn't mean we've stopped adding new ones. Double front seatbelt pretensioners and adaptive brake lights are just two examples of how Corsa achieves such a high safety rating.



**Double pretensioners.** Front seatbelt pretensioners act on the diagonal shoulder restraint on all models. And on most models the lap belt too. So in the event of a collision, they're ready to interact with the front airbags and compensate for lateral seat movement.

**Daytime driving lights.** As well as providing a striking style accent on the New Corsa the daytime running lights improve your visibility to other road users whatever the conditions.



**Adaptive Forward Lighting (AFL).** Night driving has always had the potential to generate stress. New Corsa's advanced halogen AFL system projects the headlight beams into curves and provides extra side illumination when making extreme turns. The result: less stress, more safety. Optional on SE, SXi and SRI.

**Airbags.** Most Corsa models feature double-action front seatbelt pretensioners and up to six airbags, including front seat side-impact and curtain airbags too. Press a button on the centre console to deactivate the front passenger's airbag and you can keep a rear-facing child seat up front.



**Static cornering light.** Halogen Adaptive Forward Lighting throws light 90 degrees left or right for enhanced lateral vision. The system operates up to 25mph, also while reversing. See page 63 for more details.



**Dynamic curve light.** Halogen Adaptive Forward Lighting moves the headlight beams outwards up to 15 degrees left or right of the straight ahead position when you turn the steering wheel, helping improve your vision of the approaching bend. See page 63 for more details.



**Adaptive brake lights.** ABS brakes can shorten your stopping distance in slippery road conditions, but what about the driver behind you? With Corsa, if the ABS is activated at over 18mph, your brake lights blink at five times a second, warning the following driver that you're emergency braking.



**Security.** Every Corsa features an engine deadlock immobiliser as standard. Expression models are fitted with central locking whilst all other models feature remote control central deadlocking. There's also an internal door locking switch for added reassurance in the event of unwanted attention from outside the car.

How do you build a small car that feels like a big one? You give it plenty of space for you and your friends. You make room available for all your kit with clever storage solutions. And you make plenty of smart features available, so every New Corsa is exactly the way you want it.



**Flex-Fix®.** The revolutionary Flex-Fix® system incorporates an integrated carrier for two bikes, so you don't need a separate roof or rear carrier. Optional at extra cost on Exclusiv, SE and SXi models, most of the time Flex-Fix® stays hidden behind the rear number



plate, but when the need arises, you simply extend it, attach the extra rear lights, fix your bikes to the carrier and off you go. An acoustic warning sounds when the carrier is extended and reverse gear is engaged. Please see additional information on page 62.



**DualFloor luggage compartment.** When the rear seat backs are folded, it provides a long, level, load surface which makes loading that bit easier. And when lowered, it offers a deeper load area. Optional at extra cost on SE, SXi and SRI models.



**Clever storage.** Corsa has so many places to keep your belongings. There are drinks holders and stowage compartments in the centre console, an under seat storage tray under the front passenger's seat and the front door pockets (and rear side panels on 3-door models) have holders for bottles up to 1.5l.



*Flex-Fix bike carrier, dark-tinted rear windows, 17-inch alloy wheels and two-coat metallic paint are optional at extra cost.*





**Easy life.** New Corsa is available with some pretty brilliant features so you never have to compromise on what you really want. Like Electronic Climate Control. Heated steering wheel. Or simply added peace of mind. So it's easy to choose a new Corsa that fits the way you live perfectly.



**Cruise control.** The easy-to-use, twist up/twist down cruise control – standard on many models and available as part of the Plus Pack on Exclusiv – allows you to maintain a steady speed without keeping your foot on the throttle. So it's more comfortable on long journeys and easier to keep to speed limits too.

**Sunroof with interior blind.** Optional at extra cost on Exclusiv, SE, SXi and SRi models, the electrically operated glass sunroof stretches wide across the car for maximum fresh air and blue sky. And if the sun's too strong, you simply pull out the roller blind to reduce glare.

**Rain and light sensors.** Automatic lighting control can switch the car's lights on when it gets dark. Other sensors can switch the wipers on and even dim the rear-view mirror – all automatically. These features are standard on SE and optional as the Sight and Light Pack on SXi and SRi.



**Winter Pack.** Standard on SE and optional on Exclusiv, SXi, Limited Edition and SRi models, the Winter Pack provides both driver and front passenger with heated seats, while the heated steering wheel is a first-in-class feature.



**Air con and ECC.** Air conditioning provides chilled air on hot days, faster demisting on damp days and a more pleasant atmosphere throughout the year. Move up to Electronic Climate Control (ECC) for a more consistent control of the interior temperature.



**Driving position.** You're going to be spending some quality time in your New Corsa. So we've made it easy for you to make sure it's exactly how you want it. The Corsa interior is big on ergonomic efficiency. Which means it's designed around real people, with space to relax and plenty of room for long legs and broad shoulders – front and rear. All the controls are within easy reach so you don't have to take your eyes off the road for more than a moment to adjust the heating or the audio, for example.

Best of all, it's easy to find the perfect seating position with a driver's seat that moves six ways – including height adjustment – on most models. On Exclusiv models and above (optional on S as part of the Plus Pack), you'll find fully adjustable steering too, bringing us right back to what we said earlier about real people and perfect ergonomics.





**Comfort equipment**



*Touch and Connect multi-media satellite navigation system is optional at extra cost.*





#### Mobile phone system with Bluetooth®.

The New Corsa's optional dual band mobile phone system\* is fully integrated into the audio and communication system and features voice control that connects wirelessly to phones with Bluetooth® technology.

The multi-function display menus are easy to navigate using the steering wheel audio controls and certain functions can be controlled by voice activation. The audio unit is automatically muted during calls.

It's the perfect way to stay safely in touch with everyone while on the move.

\*Does not include phone or cradle. Please refer to the online Vauxhall Car and Accessory Price Guide for a list of phone-specific cradles.

**Get connected.** And stay connected on the move. A touch-screen navigation system. CD players. Bluetooth® technology. All easy to use, and all available in the New Corsa.

**CD 30.** Choose Expression or S and you get a quality CD player/stereo radio featuring 36 station presets and four speakers with 17 watts per channel output.

**CD 30 MP3.** Select Exclusiv, Limited Edition, SE, SXi or SRi and you're also treated to a seven speaker system including MP3 CD format and an auxiliary-in socket so you can play tracks direct from your personal MP3 player.

**Touch and Connect.** An optional intuitive touch-screen navigation system complete with USB connection and Bluetooth® facility.

The perfect in-car multimedia solution. The New Corsa's sophisticated system packs all the latest technology:


- 5" touch-screen colour display and steering wheel control for easy, intuitive operation
- Dynamic navigation with bird's eye view map
- Navigation data for 28 European countries on SD card
- CD player with MP3 format
- Auxiliary-in and USB connection with full control and browsing capability for portable MP3 players
- Bluetooth® wireless connectivity for hands-free calling and audio streaming with detailed track information on display
- 4 x 20 watts per channel output and 7 premium speakers



**Bluetooth®.** Your phone interfaces with the infotainment unit for operation via the steering wheel control, facia display or voice activation via Bluetooth®.



**Auxiliary-in socket.** Most New Corsa models feature an auxiliary-in socket so you can play tracks direct from your own personal MP3 player.



## New Corsa. You choose.

So here's the question. Do you get what you want? Or make do with what you get? We suspect the former. So it's just as well that New Corsa comes with a brilliant choice of feature-packed models, petrol and diesel engines, and drop-dead gorgeous colour and trim choices.



## Expression and S

Standard features include:

- Driver's and front passenger's dual-stage airbags
- Anti-lock Braking System (ABS)
- Emergency Brake Assist
- Electronic engine deadlock immobiliser
- CD player/stereo radio (CD 30)
- Speed-sensitive power-assisted steering
- Door-to-door illumination
- Electrically adjustable door mirrors
- Body-colour bumpers
- Map pockets on front seat backs
- Central locking
- Chrome-style headlights
- Daytime running lights

In addition, S models include:

- Remote control central deadlocking
- Electrically operated front windows
- Welcome lighting

Optional S Plus Pack:

- Driver's seat height adjuster
- Steering column adjustable for reach and rake

### Engine availability

### Insurance groups (ABI)\*

Expression 3-door	
1.0i 12v ecoFLEX	1E

S 3- and 5-door	
1.0i 12v ecoFLEX	2E
1.2i 16v VVT	5E
1.2i 16v VVT ecoFLEX Easytronic	5E
1.3CDTi 16v (75PS) ecoFLEX	8E
1.3CDTi 16v (75PS) ecoFLEX Start/Stop	8E
1.3CDTi 16v (95PS) ecoFLEX Start/Stop	8E

*\*Provisional data.*

*Insurance groups relate to the 50 group rating.*

*S model illustrated with air conditioning and optional Plus Pack at extra cost.*



## Exclusiv

Additional features over and above S models include:

- Front seat side-impact and full-size curtain airbags
- CD player with MP3 format/auxiliary-in socket/stereo radio (CD 30 MP3)
- Steering wheel mounted audio controls
- Steering column adjustable for reach and rake
- Driver's seat height adjuster
- 60/40 split-folding rear seat back
- Twin electrically adjustable/heated door mirrors (wide-angle on driver's side)
- Chrome-effect interior detailing
- Body-colour door handles
- 15-inch steel wheels

Optional Exclusiv Plus Pack:

- 15-inch five twin-spoke alloy wheels
- Cruise control
- Front fog lights
- Multi-function trip computer

## Engine availability

## Insurance groups (ABI)\*

3- and 5-door	
1.2i 16v VVT	6E
1.2i 16v VVT ecoFLEX Easytronic	6E
1.4i 16v VVT	8E
1.4i 16v VVT automatic	8E
1.3CDTi 16v (75PS) ecoFLEX	8E
1.3CDTi 16v (75PS) ecoFLEX Start/Stop	8E
1.3CDTi 16v (95PS) ecoFLEX Start/Stop	8E

*\*Provisional data.*

*Insurance groups relate to the 50 group rating.*

*Model illustrated features air conditioning and two-coat metallic paint, optional at extra cost.*

*Model illustrated features Reflection cloth trim in Charcoal.*







*Model illustrated features Reflection cloth trim in Orange.*



*Model illustrated features Reflection cloth trim in Blue.*

**SE**

Additional features over and above  
Exclusiv models include:

- Air conditioning
- 16-inch alloy wheels
- Automatic Lighting Control
- Rain-sensitive windscreen wipers
- Front and rear seats with Morrocana side bolsters
- Front fog lights
- Translucent lighting and window controls
- Electrically heated leather-covered steering wheel
- Electrically heated front seats
- Sports instruments
- Alloy-effect front door sill covers
- Cruise control
- Multi-function trip computer

**Engine availability**

Engine availability	Insurance groups (ABI)*
3- and 5-door	
1.2i 16v VVT	6E
1.4i 16v VVT	8E
1.4i 16v VVT automatic	8E
1.3CDTi 16v (75PS) ecoFLEX	5E
1.3CDTi 16v (75PS) ecoFLEX Start/Stop	5E
1.3CDTi 16v (95PS) ecoFLEX	9E
1.7CDTi 16v (130PS) ecoFLEX	16E

*\*Provisional data.  
Insurance groups relate to the 50 group rating.*

*Model illustrated features electronic climate control (including graphic info display), optional at extra cost.*



## SXi

Additional features over and above

Exclusiv models include:

- 16-inch alloy wheels
- Front fog lights
- Dark-style tail lights
- Sports-style front seats
- Sports instruments
- Leather-covered sports steering wheel
- Dark-tinted windows (excludes windscreen and front door windows)
- Chrome-effect exhaust tailpipe
- Cruise control
- Multi-function trip computer
- Front map reading lights
- Rear reading light (5-door)

### Engine availability

3- and 5-door

1.2i 16v VVT	6E
1.4i 16v VVT	8E
1.4i 16v VVT automatic	8E
1.3CDTi 16v (75PS) ecoFLEX	5E
1.3CDTi 16v (75PS) ecoFLEX Start/Stop	5E
1.3CDTi 16v (95PS) ecoFLEX	9E

*\*Provisional data.*

*Insurance groups relate to the 50 group rating.*

*Model illustrated features air conditioning and rear parking distance sensors, optional at extra cost.*

### Insurance groups (ABI)\*



### Limited Edition

Additional features over and above

Exclusiv models include:\*

- 17-inch black twin-spoke alloy wheels
- Body-colour sports front lower spoiler, side sills, rear lower skirt and rear spoiler
- Sports suspension
- Front fog lights
- Dark-style tail lights
- Dark-tinted windows (excludes windscreen and front door windows)
- Air conditioning
- Sports-style front seats
- Leather-covered steering wheel
- Sports pedals
- Cruise control
- Multi-function trip computer
- Red or yellow interior seat stitching
- Red, white or yellow air vent rings
- Choice of three exterior colours – Glacier White, Flame Red or Sunny Melon each with a Black Sapphire roof

### Engine availability

3- and 5-door

1.2i 16v VVT

1.3CDTi 16v (75PS) ecoFLEX

### Insurance groups (ABI)\*\*

7E

5E

\*\*Provisional data.

Insurance groups relate to the 50 group rating.

\*Limited Edition models do not feature the following Exclusiv features: front seat side-impact and full-size curtain airbags, pyrotechnic front lap belt pretensioner system and 60/40 split-folding rear seat back.

Model illustrated features Twist cloth in Charcoal/Red and red air vent rings.







*Model illustrated features Twist cloth in Charcoal/Red and white air vent rings.*



*Model illustrated features Twist cloth in Charcoal/Yellow and yellow air vent rings. Steering wheel features yellow stitching.*

## SRI

Additional features over and above SXi models include:

- 17-inch alloy wheels
- Body-colour sports front lower spoiler, side sills, rear lower skirt and rear spoiler
- Sports suspension
- Air conditioning
- Sports pedals
- Progressive rate variable ratio speed-sensitive power steering

### Engine availability

3- and 5-door

1.4i 16v VVT

1.7CDTi 16v (130PS) ecoFLEX

### Insurance groups (ABI)\*

8E

16E

*\*Provisional data.*

*Insurance groups relate to the 50 group rating.*

*Model illustrated features Sight and Light Pack, optional at extra cost.*









*Vehicle illustrated features the following accessories fitted at extra cost: Linea stripes pack, 17-inch white alloy wheels, body side protection mouldings, VXR styling kit and base carrier roof rack system with Thule roof box. In addition dark-tinted rear windows are optional at extra cost.*



Vauxhall accessories are the right choice for your New Corsa. Whatever you're into, there's certain to be a Vauxhall accessory with your name on it, all fitted by trained Vauxhall professionals. We've only featured a small selection of what's available here, so please check with your Vauxhall retailer for accessory availability information or visit our website at [www.vauxhall.co.uk](http://www.vauxhall.co.uk)



**Privacy shades.** Available for the rear side and tailgate windows, privacy shades provide shade for rear seat passengers and increase security. The tailored fit still allows the rear windows to be opened.



**Rear parking distance sensors.** Activated automatically as you select reverse, this clever system beeps faster the closer you get to an obstruction, changing to a continuous tone at 300mm away.



**Base carrier.** The Vauxhall roof rack system begins with this base carrier. It comprises of two T-track bars which support a wide range of attachments. Each carrier is supplied with locks for added security.



**Thule bicycle carrier.** Used in conjunction with the Vauxhall base carrier this system, manufactured by Thule, allows a bicycle to be transported on the roof of your vehicle. Designed to enable easy installation, the bicycle is secured using quick release straps and a lock for security. Available in steel or aluminium.

#### FURTHER ACCESSORIES INCLUDE:

- Thatcham approved alarm system
- Floor mats
- Cargo liner
- Mudflaps
- Headlight protectors
- Detachable tow bar
- Electrically chilled 12-litre cool bag
- Thule roof boxes
- Thule alloy ski carrier
- Anti-slip mat
- Steering wheel security bar
- Child seats
- Alloy wheels
- VXR styling accessories





Inspired by our racing heritage, Vauxhall VXR styling products come with all the same experience, knowledge, and passion for style and performance. They put the accent firmly on quality and exclusivity, with a winning edge. And they add flair, personality and excitement to every Corsa model.



**VXR Styling Pack.** Standard on Limited Edition and SRi models this pack is optional on SE and SXi models and consists of a front lower spoiler, side sills, rear roof spoiler and rear skirt. In addition, SE models include a chrome-effect exhaust tailpipe (standard on SXi). These items are also available separately as retailer-fit accessories. Vehicle illustrated also features electric glass sunroof, Adaptive Forward Lighting and two-coat metallic paint optional at extra cost.



## New Corsa VXR.

This is extra-sensory stimulation. Cars with soul and power to make you feel alive, electrified and inspired. A range of driver-focused, performance machines for the road, born on the track.





Whichever way you look at it, New Corsa VXR doesn't hang around. The lightweight 1.6 litre turbo puts out 192PS and the software controlled overboost increases max torque to 260+Nm for safer overtaking. No worries in the chassis department either. With lowered sports suspension, bigger brakes and Electronic Stability Programme (ESP) with traction control – it's all designed for rapid, safe progress.



**Interior features include:**

- Recaro shell-backed sports front seats
- Three-spoke flat bottom leather-covered sports steering wheel with VXR logo
- Unique VXR gear knob
- Sports pedals
- Air conditioning
- VXR alloy-effect door sill covers

**Exterior features include:**

- 17-inch Y-design alloy wheels (below)
- 18-inch alloy wheels with anthracite inner, optional at extra cost (right)
- VXR honeycomb sports grille and air dam/bumper
- VXR side sills, rear bumper incorporating diffuser and rear roof spoiler

For more information on the New Corsa VXR please ask your Vauxhall retailer for a copy of the latest VXR range brochure.









**Flame Red – Solid**

Available on Expression/S/Exclusiv/SE/SXi/Limited Edition\*/SRi.



**Glacier White – Solid**

Available on Expression/S/Exclusiv/SE/SXi/Limited Edition\*/SRi.



**Royal Blue – Solid**

Available on S/Exclusiv/SE.



**Star Silver – Metallic\*\***

Available on S/Exclusiv/SE/SXi/SRi.



**Chilli Orange – Metallic\*\*\***

Available on S/Exclusiv/SE/SXi/SRi.



**Silver Lake – Metallic\*\***

Available on S/Exclusiv/SE/SXi/SRi.



**Lime Green – Pearlescent\*\*\***

Available on S/Exclusiv/SE/SXi/SRi.



**Oriental Blue – Pearlescent\*\***

Available on S/Exclusiv/SE.



**Black Sapphire – Pearlescent\*\***

Available on S/Exclusiv/SE/SXi/SRi.

**Linea Stripes Pack\*\***

Express your style with a new Corsa Linea Stripes Pack.

Available in these striking combinations.



**Flame Red – Solid**

Available on Exclusiv/SXi/SRi.



**Chilli Orange – Metallic\*\***

Available on Exclusiv/SXi/SRi.



**Technical Grey – Metallic\*\***

Available on Exclusiv/SXi/SRi.



**Guacamole – Solid**

Available on S/Exclusiv/SE/SXi/SRi.

**Sunny Melon – Solid**

Available on S/Exclusiv/SE/SXi/Limited Edition\*/SRi.

**Pepperdust – Metallic\*\***

Available on Exclusiv/SE.

**Technical Grey – Metallic\*\***

Available on S/Exclusiv/SE/SXi/SRi.

**Waterworld – Pearlescent\*\***

Available on S/Exclusiv/SE/SXi/SRi.

**Lime Green – Pearlescent\*\***

Available on Exclusiv/SXi/SRi.

**Oriental Blue – Pearlescent\*\***

Available on Exclusiv.

**Black Sapphire – Pearlescent\*\***

Available on Exclusiv/SXi/SRi.

This season's 'must have' colour? Take your pick from a brilliant range of Corsa shades. And if you really want to stand out from the crowd take a look at our new Limited Edition range or our optional Linea Stripes Pack combinations.

*\*Limited Edition models feature a Black Sapphire roof.*

*\*\*Optional at extra cost.*

*†Exterior colour not available until Spring 2011.*

*Due to the limitations of the printing process, the colours reproduced may vary slightly from the actual paint colour. As a result, they should be used as a guide only. Your Vauxhall retailer has a comprehensive display of our paint samples. Vehicle illustrated is a non-specific model.*

With funky colours you need a matching interior. New Corsa, better looking inside and out.



**Punch cloth – Charcoal**  
Standard on Expression and S models.



**Reflection cloth – Charcoal**  
Standard on Exclusiv models.



**Twist cloth – Charcoal/Red**  
Standard on SXi models.



**Twist cloth – Charcoal/Red**  
Standard on Limited Edition models  
(available with Flame Red and Glacier White exterior colours).





**Reflection cloth – Blue**

Optional on Exclusiv models at no cost (available with Glacier White, Waterworld, Technical Grey and Silver Lake exterior colours).



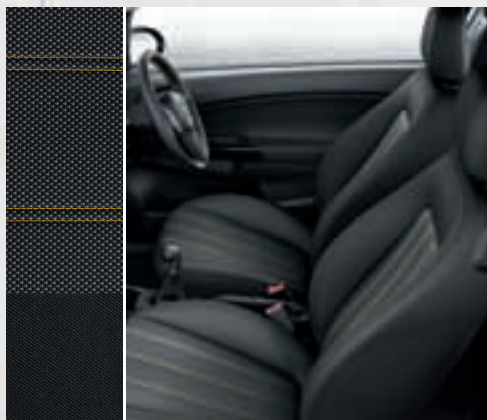
**Reflection cloth – Orange**

Optional on Exclusiv models at no cost (available with Glacier White, Guacamole, Black Sapphire, Star Silver, Chilli Orange and Technical Grey exterior colours).



**Drops cloth/Morrocana – Charcoal**

Standard on SE models.



**Twist cloth – Charcoal/Yellow**

Standard on Limited Edition models (available with Sunny Melon exterior colour).



**Tracks cloth – Charcoal/Red**

Standard on SRi models.

*The colours illustrated may vary slightly from the actual trim material. As a result, they should be used as a guide only. Your Vauxhall retailer has a comprehensive display of our trim swatches.*

**Standard wheels:**

**Expression/S\***



14-inch steel wheels with flush covers and 185/70 R 14 tyres.

**S\*\***



14-inch steel wheels with flush covers and 175/70 R 14 tyres.

**Exclusiv**



15-inch steel wheels with flush covers and 185/65 R 15 tyres.

**SE**



16-inch alloy wheels with 195/55 R 16 tyres.

**SXi†**



16-inch alloy wheels with 195/55 R 16 tyres.

**SXi††**



16-inch alloy wheels with 195/55 R 16 tyres.

**SRI**



17-inch alloy wheels with 215/45 R 17 tyres.

**Limited Edition**



17-inch alloy wheels in black with 215/45 R 17 tyres.

**Linea Stripes Pack**



17-inch alloy wheels in white with 215/45 R 17 tyres.

*\*Not including 1.3CDTi 16v (95PS) ecoFLEX Start/Stop models.*

*\*\*1.3CDTi 16v (95PS) ecoFLEX Start/Stop models only.*

*†1.2i 16v VVT models only.*

*††All models except 1.2i 16v VVT.*



Optional wheels:#

Exclusiv



15-inch alloy wheels with 185/65 R 15 tyres.

SE



17-inch alloy wheels with 215/45 R 17 tyres.

SXi##



17-inch alloy wheels with 215/45 R 17 tyres.

#Extra-cost option. 17-inch alloy wheels not available with 1.3CDTi 16v (75PS).  
##Not available with Linea Stripes Pack.

**Please note:** Limited Edition and SRI models feature an emergency tyre inflation kit in lieu of a spare wheel. In addition 1.7CDTi 16v models have five-stud wheels.

The right wheels can make all the difference to the New Corsa's look. Make sure you get the wheels to really set off your styling.

Contents	
Equipment	
Safety Security	52
Heating and ventilation Facia, instruments and controls Seating	53
Additional interior features Mechanical	54
Exterior and convenience features Exterior protection and styling Exterior lighting	55
Audio, navigation and communication Option packs	56
Technical data	
Engines	58
Performance, fuel economy and emissions	59
Weights and towing data	60
Vauxhall Assistance and warranties, transmissions, steering, suspension, brakes, body and fuel tank capacity	61
Exterior dimensions Luggage capacities	62
Features explained	63

## Safety

**Standard features** • Driver's dual-stage airbag • Front passenger's dual-stage airbag • Pedal release system – Reduces potential injury to the driver's legs and feet during a severe frontal impact • Laminated windscreen • Reinforced passenger safety cell • Side-impact protection beams • Fuel tank located ahead of rear axle

• Child-proof locks on rear doors • ISOFIX child seat restraint system for outer rear seats incorporating top tether – Secures specially designed ISOFIX child safety seats to the vehicle itself, virtually eliminating the dangers that can result from improper installation (does not include child seat) • Deactivation switch for front passenger's airbag

• Anti-lock Braking System (ABS) with Electronic Brakeforce Distribution • Straight Line Stability control • Cornering Brake Control • Emergency Brake Assist – see **D2** on page 63 • Adaptive Brake Lights • Drag Torque Control – Helps maintain stability when suddenly lifting off the accelerator

• Height-adjustable front seat head restraints • Height-adjustable front seatbelts • Pyrotechnic front body-lock seatbelt buckle pretensioner system – Tightens the diagonal belt during the early stages of a frontal impact • Driver's and front passenger's seatbelt force limiters – Reduces potential upper body injuries during a frontal impact • Adjustable outer rear seat head restraints • Three inertia-reel lap and diagonal rear seatbelts • Anti-submarining ramps in all seats – Help prevent occupants sliding underneath the lap belt during a collision • Driver's seatbelt unfastened audible warning

<b>Additional features</b>	Exp.	S	Exclusiv	SE	SXi	Ltd. Ed.	SRi
Front seat side-impact airbags	□	□	●	●	●	□	●
Full-size curtain airbags	□	□	●	●	●	□	●
Pyrotechnic front lap belt pretensioner system	□	□	●	●	●	□	●
Electronic park/brake pedal safety interlock (on automatic transmission models)			●	●	●		
Electronic Stability Programme-plus (ESP-plus) with traction control – see <b>D1</b> on page 63	○	○	○	○	○	○	○
ISOFIX child seat restraint system for front passenger's seat (does not include child seat)		○	○	○	○		○
Height-adjustable centre rear seat head restraint (five-door models only)		○	○	○	○	○	○

## Security

**Standard features** • Electronic theft protection for audio equipment • Electronic engine deadlock immobiliser • 'Key left in ignition' audible warning • Visible Vehicle Identification Number (VIN) • Locking wheel bolts for alloy wheels (where fitted) • Door-to-door illumination

<b>Additional features</b>	Exp.	S	Exclusiv	SE	SXi	Ltd. Ed.	SRi
Central locking (doors, tailgate, fuel flap)	●						
Remote control central locking (doors, tailgate, fuel flap) with security deadlocks		●	●	●	●	●	●



## Heating and ventilation

**Standard features** • Side window demist vents and four adjustable heating and ventilation outlets • Air blend heater with four-speed fan and illuminated controls • Interior pollen filter

<b>Additional features</b>	Exp.	S	Exclusiv	SE	SXi	Ltd. Ed.	SRI
Interior odour-reducing activated charcoal filter	●	● <sup>1</sup>	● <sup>1</sup>		● <sup>1</sup>		
Air conditioning (includes air recirculation facility)		○	○	●	○	●	●
Electronic climate control incorporating air conditioning <sup>2</sup> (includes graphic information display)				○	○ <sup>3</sup>	○	○

## Facia, instruments and controls

**Standard features** • Multi-function display panel showing time, date, audio information and outside air temperature (with ice warning function) • Digital clock with automatic RDS time adjustment • Adjustable speed limit audible warning – Allows the driver to set the speed above which an alarm sounds • Trip odometer • Rev counter • Electronically controlled fuel gauge • Low fuel level warning light • Headlight/brake light bulb failure warning light • Service-due indicator • Handbrake-on warning light • Instrument panel light dimmer • Glovebox with lid • Electrical accessory socket

<b>Additional features</b>	Exp.	S	Exclusiv	SE	SXi	Ltd. Ed.	SRI
Shift-up indication light	●	●	●	●	●	●	●
Steering column adjustable for reach and rake		□	●	●	●	●	●
Leather-covered steering wheel						●	
Leather-covered sports steering wheel <sup>4</sup>					●		●
Electrically heated leather-covered steering wheel			□	●	□	□	□
Sports instruments				●	●		●
Multi-function trip computer (instantaneous fuel consumption, average fuel consumption, amount of fuel used, average speed, distance travelled, range remaining, stop watch)			□	●	●	●	●
Cruise control			□	●	●	●	●

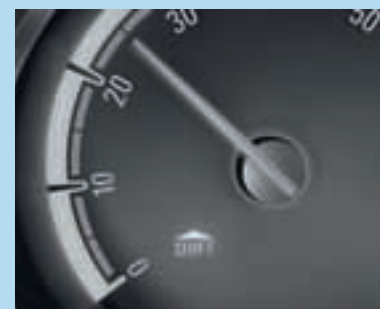
## Seating

**Standard features** • Reclining front seats • Front passenger's underseat storage tray (deleted if optional glass sunroof is specified) • Adjustable rear seat backrest • Easy-entry front seats with memory function (three-door models only) • Map pockets on front seat backs

<b>Additional features</b>	Exp.	S	Exclusiv	SE	SXi	Ltd. Ed.	SRI
Driver's seat height adjuster		□	●	●	●	●	●
Front passenger's seat height adjuster <sup>5</sup>			○	○	○		○
Sports-style front seats					●	●	●
Electrically heated front seats			□	●	□	□	□
One-piece folding rear seat	●	●				●	
60/40 split-folding rear seat back			●	●	●		●



Electronic climate control.



Shift-up indication light.

- = Standard equipment.
- = Optional at extra cost.
- = Only available as part of an extra-cost option pack (see page 56 for details).
- Exp. = Expression.
- Ltd. Ed. = Limited Edition.

- 1 = Activated charcoal filter is deleted if optional air conditioning is specified.
- 2 = Not available in conjunction with Touch and Connect multi-media unit.
- 3 = Only available on models fitted with air conditioning.
- 4 = Not available in conjunction with Winter Pack.
- 5 = Fitted in conjunction with optional glass sunroof. Not available separately.



Stowable luggage compartment cover (behind rear seat back) and DualFloor luggage compartment.



Front door pockets.



Chrome-effect trim on instrument surrounds.

## Additional interior features

**Standard features** • Front door pockets • Rear door pockets (five-door models only) • Rear bottle holders (three-door models only) • Chrome-effect door handles • Drinks holder and coin holders in centre console • Front passenger's tiltable assist handle • Two rear tiltable passenger assist handles (five-door models only) • Dipping rear-view mirror • Twin sunvisors, front passenger's with vanity mirror and sliding cover • Luggage compartment cover • Stowage facility for luggage compartment cover behind rear seats • Illuminated luggage area • Load restraint lashing eyes • Interior tailgate handles • Interior courtesy light operated by door switches • Chrome-effect handbrake button • Translucent lighting for radio control

Additional features	Exp.	S	Exclusiv	SE	SXi	Ltd. Ed.	SRi
Chrome-effect trim on instrument surrounds			●	●	●	●	●
Chrome-effect gear knob trim (manual models only)			●	●	●	●	●
Matt chrome-effect centre console	●	●					
Pearl white centre console and steering wheel inlays			● <sup>6</sup>				
Matt chrome-effect centre console and steering wheel inlays			● <sup>7</sup>				
Piano black centre console and steering wheel inlays					●	●	●
Stealth black centre console and steering wheel inlays				●			
Air vent rings colour-keyed to exterior body colour						●	
Rear reading light (five-door models only)				●	●		●
Front map reading lights			○ <sup>5</sup>	●	●		●
Translucent lighting for window and lighting controls				●			
Electro-chromatic anti-dazzle rear-view mirror				●	□		□
DualFloor luggage compartment				○	○		○
Sports pedals						●	●

## Mechanical

**Standard features** • Front-wheel drive • Speed-sensitive electric power-assisted steering • Gas-pressure dampers • Front anti-roll bar

Additional features	Exp.	S	Exclusiv	SE	SXi	Ltd. Ed.	SRi
Five-speed manual gearbox (excluding 1.3CDTi 16v (95PS), 1.7CDTi 16v models)	●	●	●	●	●	●	●
Six-speed manual gearbox (1.3CDTi 16v (95PS), 1.7CDTi 16v models)				●	●		●
Four-speed automatic transmission with Winter driving mode (1.4i 16v VVT models only)			○	○	○		
Easytronic five-speed transmission with sequential manual gearshift or automatic mode (1.2i 16v VVT models only)		○	○				
Progressive-rate variable ratio power-assisted steering				○ <sup>8</sup>	○ <sup>8</sup>	●	●
Lowered suspension <sup>9</sup>		●	●				
Sports suspension with lower ride height				○ <sup>8</sup>	○ <sup>8</sup>	●	●



## Exterior and convenience features

**Standard features** • Heated rear window • Intermittent rear window wash/wipe • Two-speed windscreen wipers with variable intermittent wipe • Tinted glass • Manually foldable door mirrors

<b>Additional features</b>	Exp.	S	Exclusiv	SE	SXi	Ltd. Ed.	SRI
Rain-sensitive windscreen wipers				●	□		□
Electrically operated front windows with safety autoreverse and one-touch facility		●	●	●	●	●	●
Twin electrically adjustable door mirrors (wide-angle on driver's side)	●	●					
Twin electrically adjustable/heated door mirrors (wide-angle on driver's side)			●	●	●	●	●
Folding key		●	●	●	●	●	●
Electrically operated sliding glass sunroof with interior blind <sup>10</sup>			○ <sup>11</sup>	○	○		○
Rear parking distance sensors <sup>12</sup>			○	○	○	○	○
Flex-Fix <sup>®</sup> integrated carrier system (includes two-bicycle carrier attachment) <sup>13</sup>			○ <sup>11</sup>	○	○		
Two-coat metallic or pearlescent paint		○	○	○	○		○

## Exterior protection and styling

<b>Features</b>	Exp.	S	Exclusiv	SE	SXi	Ltd. Ed.	SRI
Body-colour bumpers and tailgate handle	●	●	●	●	●	●	●
Part body-colour door mirrors	●	●	●	●	●	●	●
Body-colour door handles			●	●	●	●	●
Body-colour rear spoiler				□ <sup>14</sup>	□ <sup>14</sup>	●	●
Body-colour front lower spoiler/side sills/rear lower skirt (emergency tyre inflation kit in lieu of spare wheel)				□ <sup>14</sup>	□ <sup>14</sup>	●	●
Dark-style tail lights					●	●	●
Dark-tinted windows (excludes windscreen and front door windows)				○	●	●	●
Black foil on B-pillars (not with Royal Blue or optional Black Sapphire, Technical Grey and Waterworld exterior colours)			●	●	●	●	●
Black Sapphire roof						●	
Alloy-effect front door sill covers with 'Vauxhall' lettering				●			
Chrome-effect exhaust tailpipe extension				□ <sup>14</sup>	●	●	●

## Exterior lighting

**Standard features** • Chrome-style Dual Ellipsoidal halogen headlights • Daytime running lights • Lights-on audible warning • Electric headlight beam levelling • High-level LED centre brake light • Rear fog light

<b>Additional features</b>	Exp.	S	Exclusiv	SE	SXi	Ltd. Ed.	SRI
Welcome lighting		●	●	●	●	●	●
Adaptive Forward Lighting <sup>15</sup> – see <b>D3</b> on page 63				○	○		○
Automatic Lighting Control				●	□		□
Front fog lights			□	●	●	●	●



Adaptive Forward Lighting.

● = Standard equipment.  
○ = Optional at extra cost.  
□ = Only available as part of an extra-cost option pack (see page 56 for details).

Exp. = Expression.  
Ltd. Ed. = Limited Edition.

- 5 = Fitted in conjunction with optional glass sunroof. Not available separately.  
6 = Only on models fitted with Orange or Blue trim.  
7 = Only on models fitted with Charcoal trim.  
8 = Fitted in conjunction with optional 17-inch alloy wheels. Not available separately or on 1.3CDTi 16v (75PS) models.  
9 = Fitted to 1.3CDTi 16v (95PS) models only.  
10 = Also includes front passenger's seat height adjuster and front map reading lights. Deletes front passenger's underseat storage tray. Non-metallic roof panel covering is coloured black.  
11 = Not available on 1.3CDTi 16v (95PS) models.  
12 = Not available in conjunction with Flex-Fix<sup>®</sup> system.  
13 = Not available in conjunction with rear parking distance sensors or VXR Styling Pack. The spare wheel is replaced by an emergency tyre inflation kit. See page 62 for important Flex-Fix<sup>®</sup> and bicycle dimensions information.  
14 = Not available on 1.3CDTi 16v (75PS) models.  
15 = Includes dark-style headlights.



CD player/stereo radio (CD 30).



Mobile phone system with Bluetooth®.

- = Standard equipment.
- = Optional at extra cost.
- = Only available as part of an extra-cost option pack.
- Exp. = Expression.
- Ltd. Ed. = Limited Edition.

16 = Not available in conjunction with Electronic Climate Control (ECC).

17 = Not available on 1.3CDTi 16v (75PS) models or in conjunction with Flex-Fix® integrated carrier system. The spare wheel is replaced by an emergency tyre inflation kit.

18 = Not available in conjunction with electrically operated sliding glass sunroof.

19 = Not available on 1.3CDTi 16v models. Includes front fog lights.

20 = Deletes sports steering wheel.

## Audio, navigation and communication

Features	Exp.	S	Exclusiv	SE	SXi	Ltd. Ed.	SRI
<b>CD player/stereo radio (CD 30)</b> ● CD player ● AM/FM stereo radio with 36 station presets ● RDS with Traffic Programme ● Remote display ● 17 watts per channel output ● 4 speakers	●	●					
<b>CD player with MP3 format/stereo radio (CD 30 MP3)</b> ● CD player with MP3 format ● Auxiliary-in socket ● AM/FM stereo radio with 36 station presets ● RDS with Traffic Programme ● Remote display ● 20 watts per channel output ● 7 speakers			●	●	●	●	●
<b>Touch and Connect multi-media unit<sup>16</sup></b> Please see page 27 for more details ● Touch-screen satellite navigation system ● Mobile phone system with Bluetooth® ● CD player with MP3 format ● USB connection with iPod™ control ● Auxiliary-in socket ● AM/FM stereo radio ● RDS ● 20 watts per channel output ● 7 speakers			○	○	○	○	○
Mobile phone system with Bluetooth® (does not include phone or phone-specific cradle) and graphic information display			○	○	○	○	○
Steering wheel mounted audio controls			●	●	●	●	●

## Option packs

	Exp.	S	Exclusiv	SE	SXi	Ltd. Ed.	SRI
<b>VXR Styling Pack</b> ● Body-colour front lower spoiler/side sills/rear lower skirt/rear roof spoiler ● Chrome-effect exhaust tailpipe extension on SE (standard on SXi)				○ <sup>17</sup>	○ <sup>17</sup>	●	●
<b>Linea Stripes Pack<sup>18</sup></b> ● Twin stripes over bonnet, roof and tailgate ● 17-inch white alloy wheels with 215/45 R 17 ultra-low profile tyres ● White door mirror housings			○ <sup>19</sup>		○		○
<b>Sight and Light Pack</b> ● Rain-sensitive windscreen wipers ● Automatic Lighting Control ● Electro-chromatic anti-dazzle rear-view mirror				●	○		○
<b>Protection Pack</b> ● Front seat side-impact airbags ● Full-size curtain airbags ● Pyrotechnic front lap belt pretensioner system	○	○	●	●	●	○	●
<b>Winter Pack</b> ● Electrically heated front seats ● Electrically heated leather-covered steering wheel			○	●	○ <sup>20</sup>	○	○ <sup>20</sup>
<b>S Plus Pack</b> ● Driver's seat height adjuster ● Steering column adjustable for reach and rake		○	●	●	●	●	●
<b>Exclusiv Plus Pack</b> ● 15-inch alloy wheels (14-inch steel spare) with locking bolts ● Front fog lights ● Cruise control ● Multi-function trip computer			○				



**VXR Styling Pack<sup>17</sup>**

- Body-colour front lower spoiler/side sills/rear lower skirt/rear roof spoiler
- Chrome-effect exhaust tailpipe extension on SE (standard on SXi/SRi)



**Sight and Light Pack**

- Rain-sensitive windscreen wipers
- Automatic Lighting Control
- Electro-chromatic anti-dazzle rear-view mirror



**Protection Pack**

- Front seat side-impact airbags
- Full-size curtain airbags
- Pyrotechnic front lap belt pretensioner system



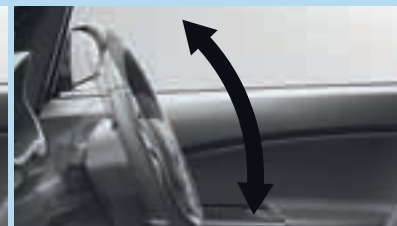
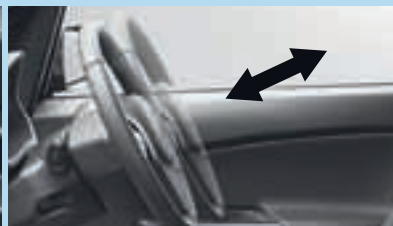
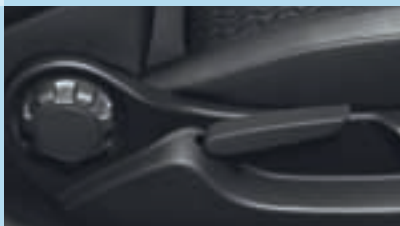
**Winter Pack**

- Electrically heated front seats
- Electrically heated leather-covered steering wheel



**S Plus Pack**

- Driver's seat height adjuster
- Steering column adjustable for reach and rake



**Exclusiv Plus Pack**

- 15-inch alloy wheels (14-inch steel spare) with locking bolts
- Cruise control
- Front fog lights
- Multi-function trip computer



## Petrol engines

	1.0i 12v Twinport ecoFLEX	1.2i 16v VVT ECOTEC-4	1.4i 16v VVT ECOTEC-4
Capacity	998cc	1229cc	1398cc
Maximum power	65PS (48kW) @ 5300rpm	85PS (63kW) @ 5600rpm	100PS (74kW) @ 6000rpm
Maximum torque	90Nm (66 lb.ft.) @ 4000rpm	115Nm (85 lb.ft.) @ 4000rpm	130Nm (96 lb.ft.) @ 4000rpm
Configuration	3 cylinders, 4 valves per cylinder, double overhead camshafts	4 cylinders, 4 valves per cylinder, double overhead camshafts	
Fuel/induction system	Naturally aspirated with vacuum-controlled Twinport inlet ports. Multi-point sequential fuel injection	Naturally aspirated with Variable Valve Timing. Multi-point sequential fuel injection	
Emission compliance	Euro 5		
Service interval	20,000 miles or 1 year (whichever occurs sooner)		
<i>Benefit in kind company car taxation – 2010/11 tax year</i>			
Manual models	10%	15%	15%
Easytronic models	-	10%	-
Automatic 3-door models	-	-	17%
Automatic 5-door models	-	-	18%

## Diesel engines

	1.3CDTi 16v (75PS) ecoFLEX with and without Start/Stop	1.3CDTi 16v (95PS) ecoFLEX Start/Stop S/Exclusiv	1.3CDTi 16v (95PS) ecoFLEX SE/SXi	1.7CDTi 16v ecoFLEX
Capacity	1248cc	1248cc	1248cc	1686cc
Maximum power	75PS (55kW) @ 4000rpm	95PS (70kW) @ 4000rpm	95PS (70kW) @ 4000rpm	130PS (96kW) @ 4000rpm
Maximum torque	190Nm (140 lb.ft.) @ 1750-2250rpm	190Nm (140 lb.ft.) @ 1750-3250rpm	210Nm (155 lb.ft.) @ 1750-2500rpm	300Nm (221 lb.ft.) @ 2000-2500rpm
Configuration	4 cylinders, 4 valves per cylinder, double overhead camshafts			
Fuel/induction system	Turbocharger with intercooler. Common rail fuel injection	Variable geometry turbocharger with intercooler. Common rail fuel injection		
Emission compliance	Euro 5 with Diesel Particulate Filter			
Service interval	20,000 miles or 1 year (whichever occurs sooner)			
<i>Benefit in kind company car taxation – 2010/11 tax year</i>				
All models	13%	13%	13%	13%



## Performance, fuel economy and emissions

	Performance*		Fuel economy mpg (litres/100km)			CO <sub>2</sub> emissions (g/km)	VED** First Year Rate	VED** Standard Rate
	Maximum speed (mph)	Acceleration 0-60mph (sec)	Urban driving	Extra-urban driving	Combined figure			
<i>Manual gearbox</i>								
1.0i 12v ecoFLEX	96	17.0	44.8 (6.3)	67.3 (4.2)	56.5 (5.0)	117	£0	£30
1.2i 16v VVT	107	12.7	40.9 (6.9)	64.2 (4.4)	53.3 (5.3)	124	£0	£90
1.4i 16v VVT	112	11.3	38.7 (7.3)	58.9 (4.8)	49.6 (5.7)	134	£110	£110
1.3CDTi 16v (75PS) ecoFLEX 3-door	101	tbc	53.3 (5.3)	80.7 (3.5)	67.3 (4.2)	110	£0	£20
1.3CDTi 16v (75PS) ecoFLEX 5-door	101	tbc	53.3 (5.3)	78.5 (3.6)	67.3 (4.2)	112	£0	£30
1.3CDTi 16v (75PS) ecoFLEX S/S	101	tbc	58.9 (4.8)	80.7 (3.5)	70.6 (4.0)	105	£0	£20
1.3CDTi 16v (95PS) ecoFLEX SE/SXi	107	tbc	52.3 (5.4)	74.3 (3.8)	64.2 (4.4)	115	£0	£30
1.3CDTi 16v (95PS) ecoFLEX S/S S/Exclusiv 3-door	110	tbc	67.3 (4.2)	91.1 (3.1)	80.7 (3.5)	94	£0	£0
1.3CDTi 16v (95PS) ecoFLEX S/S S/Exclusiv 5-door	110	tbc	65.7 (4.3)	88.3 (3.2)	78.5 (3.6)	95	£0	£0
1.7CDTi 16v ecoFLEX 3-door	124	8.9	50.4 (5.6)	74.3 (3.8)	62.8 (4.5)	118	£0	£30
1.7CDTi 16v ecoFLEX 5-door	124	8.9	49.6 (5.7)	72.4 (3.9)	61.4 (4.6)	119	£0	£30
<i>Easytronic</i>								
1.2i 16v VVT ecoFLEX	107	13.9	43.5 (6.5)	67.3 (4.2)	55.4 (5.1)	119	£0	£30
<i>Automatic</i>								
1.4i 16v VVT 3-door	107	12.9	35.3 (8.0)	56.5 (5.0)	46.3 (6.1)	143	£125	£125
1.4i 16v VVT 5-door	107	12.9	34.4 (8.2)	55.4 (5.1)	44.8 (6.3)	147	£125	£125

tbc = To be confirmed. \* = Manufacturer's figures. \*\*VED = Vehicle Excise Duty. Correct at time of publication (February 2011). S/S = Start/Stop. Fuel consumption and CO<sub>2</sub> emission data complies with the relevant EU regulations. **Important:** the results given relate to the particular vehicle tested; inevitably there are differences between individual vehicles of the same model. Driving style, road and traffic conditions, vehicle mileage and standard of maintenance may also affect fuel consumption.

## Vauxhall supporting



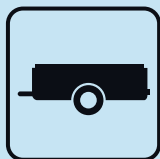
## Smarter driving tips

- **Drive at an appropriate speed:** – Staying within the speed limit increases driver safety, reduces CO<sub>2</sub> emissions and saves fuel. At 70mph you could be using up to 9% more fuel than at 60mph and up to 15% more fuel than at 50mph
- **Drive smoothly at all times:** – Anticipate the ebb and flow of the traffic to avoid harsh acceleration and braking

- **Reduce your revs:** – Change gear earlier to help reduce fuel consumption – try 2500rpm with petrol engines and 2000rpm with diesel
- **Idling is wasting fuel:** – If you're likely to be at a standstill for more than three minutes, switch off the engine to save fuel
- **Regularly check your tyre pressures:** – Under inflated tyres increase CO<sub>2</sub> emissions whilst incorrectly inflated

tyres can be unsafe. Always check your handbook for the correct tyre pressure. This will also help to increase the life of your tyres

- **Remove unnecessary items from the car:** – Extra weight increases the engine's workload, whilst roof racks and bike carriers increase wind resistance. All burn more fuel and increase CO<sub>2</sub> emissions



**1300kg**  
Maximum  
towing weight

## Weights and towing data (kg)

	Gross vehicle weight		Maximum towing weights Trailer with brakes (without brakes)	
	3-door	5-door	3-door	5-door
1.0i 12v ecoFLEX Expression	1545	–	500 (450)	–
1.0i 12v ecoFLEX S	1545	1565	500 (450)	500 (500)
1.2i 16v VVT S (exc. Easytronic)	1555	1585	850 (450)	850 (500)
1.2i 16v VVT ecoFLEX S Easytronic	1555	1585	750 (450)	750 (500)
1.2i 16v VVT Exclusiv (exc. Easytronic)	1555	1585	850 (450)	850 (500)
1.2i 16v VVT ecoFLEX Exclusiv Easytronic	1555	1585	750 (450)	750 (500)
1.2i 16v VVT SE/Limited Edition	1575	1605	850 (450)	850 (500)
1.2i 16v VVT SXi	1555	1585	850 (450)	850 (500)
1.4i 16v VVT Exclusiv	1565	1595	1000 (500)	1000 (500)
1.4i 16v VVT Exclusiv automatic	1590	1620	1000 (500)	1000 (500)
1.4i 16v VVT SE	1585	1615	1000 (500)	1000 (500)
1.4i 16v VVT SE automatic	1610	1640	1000 (500)	1000 (500)
1.4i 16v VVT SXi	1565	1595	1000 (500)	1000 (500)
1.4i 16v VVT SXi automatic	1590	1620	1000 (500)	1000 (500)
1.4i 16v VVT SRi	1585	1615	1000 (500)	1000 (500)
1.3CDTi 16v (75PS) ecoFLEX S	1645	1675	1000 (500)	1000 (500)
1.3CDTi 16v (75PS) ecoFLEX Exclusiv	1645	1675	1000 (500)	1000 (500)
1.3CDTi 16v (75PS) ecoFLEX SE/ Limited Edition	1665	1695	1000 (500)	1000 (500)
1.3CDTi 16v (75PS) ecoFLEX SXi	1645	1675	1000 (500)	1000 (500)
1.3CDTi 16v (95PS) ecoFLEX S	1600	1625	500 (500)	500 (500)
1.3CDTi 16v (95PS) ecoFLEX Exclusiv	1600	1625	500 (500)	500 (500)
1.3CDTi 16v (95PS) ecoFLEX SE	1695	1725	1200 (500)	1200 (500)
1.3CDTi 16v (95PS) ecoFLEX SXi	1675	1705	1200 (500)	1200 (500)
1.7CDTi 16v ecoFLEX SE	1750	1780	1300 (500)	1300 (500)
1.7CDTi 16v ecoFLEX SRi	1750	1780	1300 (500)	1300 (500)

**Please note:** For S/Exclusiv (exc. 1.3CDTi 16v (95PS) ecoFLEX) and SXi models fitted with optional air conditioning 20kg must be added to gross vehicle weight. 10kg must be added for S/Exclusiv 1.3CDTi 16v (95PS) ecoFLEX. **Gross vehicle weight** is the total permissible weight of the vehicle including passengers and their luggage. The **maximum roof rack loading** should not exceed a total of 75kg. The **maximum towing weights** are based on the ability of the car – with two occupants of 75kg each – to restart on a 12% gradient, which is approximately 1 in 8.3, at sea level. At altitudes above 1500 metres, the engine output may drop with a corresponding reduction in towing capability. Any extra weight, such as luggage or additional passengers, should be deducted from the maximum towing weight. With a trailer fully loaded, **maximum noseweight** should not exceed 55kg (45kg on 1.2i 16v VVT and 1.3CDTi 16v (95PS) S/Exclusiv models). Always fit Vauxhall towing attachments and accessories available from your Vauxhall retailer. They are designed specifically for Vauxhall models and carry a 12-month guarantee.



## Optional transmissions

**Five-speed Easytronic transmission:** Easytronic transmission is a five-speed manual gearbox with a fully automatic mode. In manual mode, you simply push the lever forward or back to shift gears up or down sequentially. The facia display tells you what gear you're in – 1 to 5, N for Neutral or A for Auto. Switch to fully automatic mode and it has many of the features of a regular automatic including a kickdown function. There's no clutch pedal so you can drive it on an automatic-only driving licence. Easytronic also comes with a winter mode, which selects second gear for standing starts in slippery conditions.

**Four-speed automatic transmission:** Electronically controlled, with Winter driving mode. Fluid drive with torque converter and lock-up on third and fourth ratios eliminating wasteful slip. Electronic park/brake pedal safety interlock. Neutral control fuel-saving feature. Transmission oil cooler integral with engine coolant radiator.

## Steering

- Rack and pinion
- Electric power-assisted steering standard on all models – variable rate on diesel models except 1.3CDTi 16v (95PS) ecoFLEX S/Exclusiv – progressive variable rate on Limited Edition/SRi models, and on SE/SXi models fitted with optional 17-inch alloy wheels
- Turning circle (kerb-to-kerb): All models except SE/SXi with optional 17-inch alloy wheels and Limited Edition/SRi – 10.10m (33.2ft). SE/SXi with optional 17-inch alloy wheels and Limited Edition/SRi – 11.10m (36.4ft.)

## Suspension

**Front:** Independent MacPherson struts with gas-pressure damper cartridge and coil springs. Anti-roll bar.

**Rear:** Compound crank with coil springs and gas-pressure dampers.

- Lowered suspension on 1.3CDTi 16v (95PS) ecoFLEX S/Exclusiv models
- Sports suspension with lower ride height on Limited Edition/SRi models, and on SE/SXi models fitted with optional 17-inch alloy wheels

## Brakes

- Anti-lock Braking System (ABS)
- Electronic Brakeforce Distribution
- Emergency Brake Assist
- Cornering Brake Control
- Straight Line Stability control
- Dual circuit, diagonally split, dual rate servo-assisted system
- Low brake fluid level warning light

### 1.0i 12v ecoFLEX

Front ventilated discs: 257mm diameter  
Rear drums: 203mm diameter

### 1.2i 16v VVT

Front ventilated discs: 257mm diameter  
Rear drums: 228mm diameter

### 1.4i 16v VVT

Front ventilated discs: 284mm diameter  
Rear drums: 228mm diameter

### 1.3CDTi 16v (75PS) ecoFLEX

Front ventilated discs: 284mm diameter  
Rear drums: 228mm diameter

### 1.3CDTi 16v (95PS) ecoFLEX

Front ventilated discs: 284mm diameter  
Rear drums: 228mm diameter

### 1.7CDTi 16v ecoFLEX

Front ventilated discs: 278mm diameter  
Rear discs: 264mm diameter

## Body

- Aerodynamic drag co-efficient: Cd 0,33

## Fuel tank capacity

- 40 litres (8.8 gallons) – 1.3CDTi 16v (95PS) ecoFLEX S/Exclusiv models only
- 45 litres (9.9 gallons) – except 1.3CDTi 16v (95PS) ecoFLEX S/Exclusiv models

## Vauxhall Assistance and warranties

See back cover for details of our comprehensive warranties.



Five-speed Easytronic transmission.

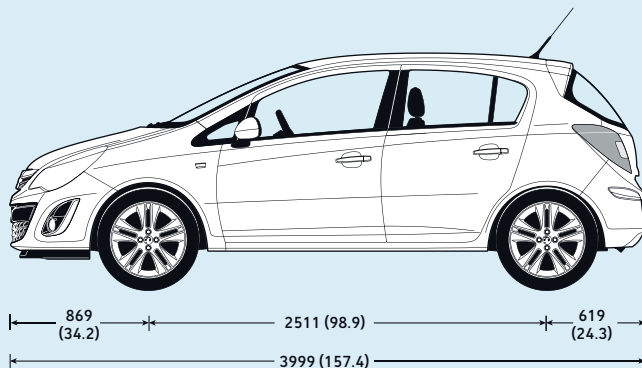
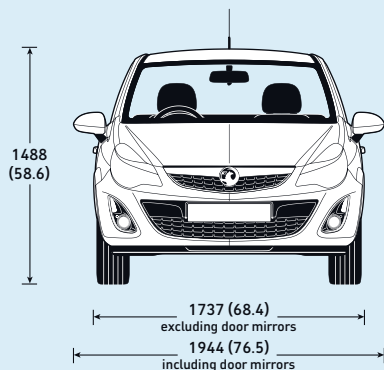
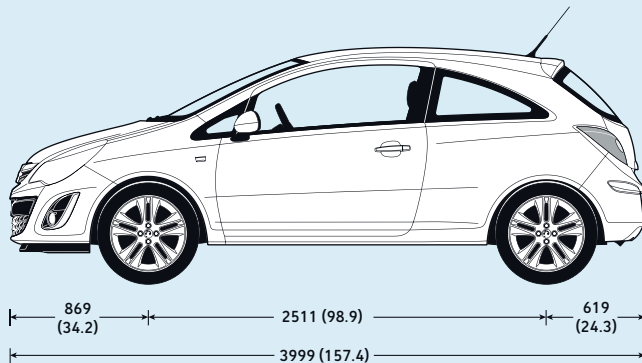
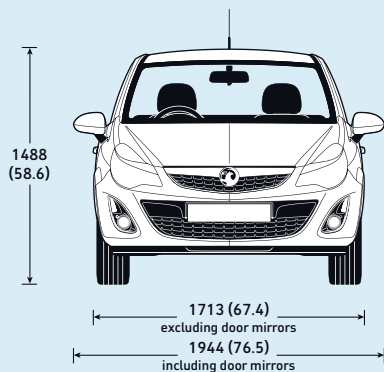


MacPherson strut front suspension.



Compound crank rear suspension.

Exterior dimensions millimetres (inches)



Luggage capacities (ECIE method)

3-door	litres	cu.ft
Rear seat up	285	10.0
Rear seat down (to glassline)	690	24.4
Rear seat down (to roof)	1050	37.1
<b>5-door</b>		
Rear seat up	285	10.0
Rear seat down (to glassline)	700	24.7
Rear seat down (to roof)	1100	38.8

Luggage compartment dimensions

3-door	mm	inches
Maximum length (seats up)	703	27.7
Maximum length*	1348	53.1
Maximum width	969	38.1
Maximum height	839	33.0
<b>5-door</b>		
Maximum length (seats up)	703	27.7
Maximum length*	1348	53.1
Maximum width	969	38.1
Maximum height	872	34.3

\* = Behind front seats.

Flex-Fix® key dimensions

	mm	inches
Maximum circumference around rim and tyre of bicycle	225	8.9
Maximum crank arm width	52	2.0
Maximum crank arm depth	25	1.0
Maximum crank arm length	no limit	



## Features explained

### Start/Stop technology

New Corsa's Start/Stop system offers real benefits by improving fuel economy and reducing CO<sub>2</sub> emissions, particularly in town. It does this by automatically stopping the engine when you come to a standstill, and then restarting as you prepare to move off.

Before automatically stopping the engine a number of system checks are carried out to ensure that it is both safe and practical to do so. To ensure safety, the driver must depress the clutch pedal, shift in to neutral, and then release the clutch pedal.

System checks carried out before Auto Stop activates include:

- Start/Stop system is not manually deactivated via the facia button
- Sufficient brake vacuum is available to prevent the car rolling down an incline
- Battery is in good condition and charged

- Outside air temperature and engine temperature are above specified minima
- Electronic climate control (where fitted) is not in maximum heating or maximum cooling mode
- Self-cleaning function of the diesel particulate filter is not active

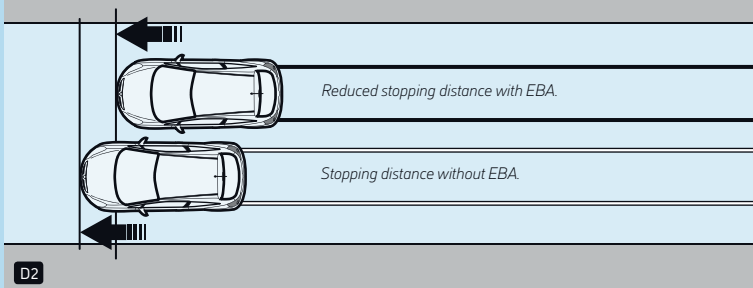
If all of these conditions are satisfied then the vehicle will Auto Stop.

When you are ready to pull away from standstill, Auto Restart is activated by depressing the clutch pedal.

Whilst at a standstill the vehicle is continually monitored. If necessary, the engine will automatically be restarted. Conditions that would initiate an Auto Restart include:

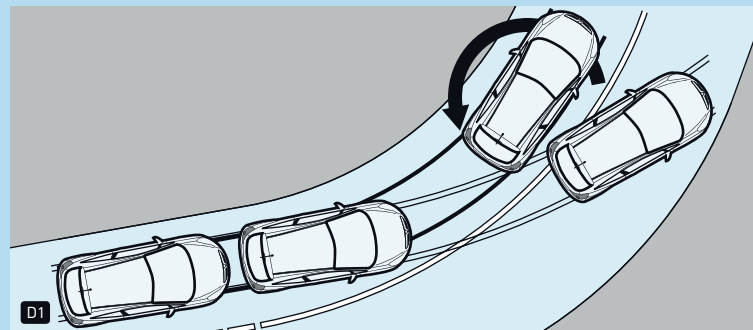
- Low battery level
- Brake vacuum below specified minimum
- Start/Stop system is manually deactivated
- Stationary for 5.5 minutes

Stopping distance at 60mph. Actuating time: 150 milliseconds.



### D2. Emergency Brake Assist (EBA)

Emergency brake assist detects the urgency with which the brake pedal is pressed and rapidly increases the pressure to the maximum the system can provide, shortening stopping distances. It also enhances pedal feel.

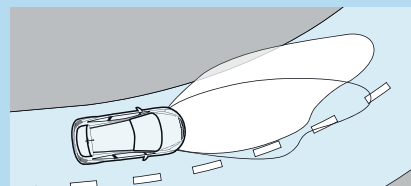


### D1. Electronic Stability Programme-plus (ESP-plus) with Enhanced Understeering Control

The system works in conjunction with the car's traction control set-up, sensing when the vehicle is about to slide on a bend and applying corrective braking to the appropriate wheel or wheels, correcting the slide and helping you regain control more rapidly.

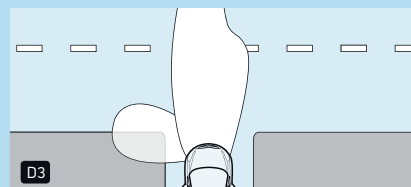
### D3. Adaptive Forward Lighting – halogen

Optional at extra cost on SE, SXi and SRi, Adaptive Forward Lighting is a sophisticated lighting system that 'allows you to see around corners'! Corsa was one of the first cars in its class to offer such technology. *Autocar* magazine described it as a 'must-have' feature. There are two main functions:



#### Curve light

Activated by movements of the steering wheel, the curve light allows the headlight beam to move up to 15 degrees outwards (8 degrees inwards) in the direction you're about to go.



#### Cornering light

When turning into a junction or rounding a tight corner, the cornering light projects an additional beam of light at approximately 90 degrees, giving a 'wide angle' effect.

# Trust Vauxhall

## Protecting the environment

Vauxhall's commitment to the environment is demonstrated by our products' many environmental awards, won both through the use of more recycled materials and by becoming cleaner and more efficient. For information on Vauxhall's efforts to achieve an environmentally sustainable future, see [www.vauxhall.co.uk/recycling](http://www.vauxhall.co.uk/recycling)

## Fleet Customer Services

Our dedicated support services for fleet managers includes factory demonstrators, a three-day test drive programme and information on whole life costs, company car taxation and finance. For further information please call **0870 010 0651**.



When you have finished with this brochure please recycle it

## Buying your car

GMAC offers one of the most comprehensive and competitive ranges of financing plans in the UK. Contact your local Vauxhall retailer for details or call the GMAC customer service centre on **0845 712 3444**.

## Servicing and maintenance

The best way to maximise the performance and reliability of your Vauxhall is to have all routine servicing and maintenance carried out at one of around 400 Vauxhall retailers. To find your nearest retailer call **0845 600 1500**.

## In the event of an accident...

Vauxhall Accident Support helps keep you mobile following an accident. Benefits include scene-of-accident advice, message service, assistance with claims and vehicle recovery. For further details call **0800 010 304**.

## Vauxhall Insurance

Available for new and used Vauxhalls, a Vauxhall Insurance policy offers a unique package designed specifically for Vauxhall drivers. For a highly competitive quotation, call **0844 84 85 840** (Great Britain) or **0845 35 13 410** (N. Ireland). Or just visit our website at [www.vauxhall.co.uk](http://www.vauxhall.co.uk)

## For more information...

For a brochure on any Vauxhall model (up to a maximum of three per caller) or location of your nearest Vauxhall retailer please **Lo-call 0845 600 1500**.

Alternatively, details can be found on our website at [www.vauxhall.co.uk](http://www.vauxhall.co.uk)

Proud Sponsor of Home Nations Football



## Vauxhall Lifetime Warranty



We're so confident in Vauxhall quality and reliability

that we are now able to offer a warranty that could last a lifetime. Available to the first owner of all new Vauxhall passenger cars, it's valid for the lifetime of the vehicle up to a maximum of 100,000 miles\*. In addition, our warranty also includes Vauxhall Assistance for 12 months from first registration and six years body panel anti-perforation warranty. Full details of Vauxhall's warranties including terms, conditions and exclusions can be obtained through any authorised Vauxhall Retailer or go to [www.vauxhall.co.uk/warranty](http://www.vauxhall.co.uk/warranty)

\*Vauxhall Lifetime Warranty covers lifetime ownership of first car owner, 100,000 mile limit, annual check required. The warranty excludes wear and tear and serviceable items and the vehicle must be serviced in accordance with the manufacturer's servicing schedule to continue the lifetime warranty. Terms and conditions apply. Offer available to all Vauxhall passenger cars (this offer does not apply to car-derived vans) from 1st August 2010.

Every effort has been made to ensure that the contents of this publication were accurate and up-to-date at the time of going to press (February 2011). Vauxhall vehicles are equipped with components manufactured by various General Motors operating units and outside suppliers. The Company reserves the right to alter specifications and withdraw products from sale without notice. Any such alterations will be notified to Vauxhall retailers at the earliest opportunity; please consult your local retailer for the latest information. The specifications detailed within this brochure are not necessarily applicable to alternative models such as Special Editions. Details of any such models will be contained in specific literature or found on the Vauxhall website. Please note that Vauxhall retailers are not the agents of General Motors UK Limited and are not authorised to bind the Company by any specific or implied undertaking or representation. It is advisable to ensure that your motor insurance policy provides adequate cover for additional fitted options and accessories. Please note accessories shown are for illustrative purposes only. As part of Vauxhall's policy of environmental care, this brochure is printed on paper manufactured using Elemental Chlorine Free pulps from specially farmed, sustainable timber resources. All rights reserved. No part of this publication may be reproduced in any form or by any means, without the prior written permission of General Motors UK Limited.

