

# SPECIAL VEHICLES

2014 Edition 1



# 999



# WELCOME

At Vauxhall Special Vehicles, we believe we understand the unique requirements of the UK Emergency Services. We can deliver a wide choice of car and van models, specifically designed and rigorously tested to meet your demands. Our flexible production facility is able to offer a one-stop shop purchasing experience so we can supply turnkey vehicle solutions that enable rapid turnaround of replacement products, plus we can now offer a unique in-house de-commissioning and re-marketing service.

This range brochure gives a brief overview of our products and services. Our dedicated website ([www.vauxhallspecialvehicles.co.uk](http://www.vauxhallspecialvehicles.co.uk)) contains comprehensive details including individual product sheets, demonstrator vehicles and Quote Requests Templates to help you understand our range availability.

## **Vauxhall Special Vehicles contacts:**

### **Dick Ellam**

Manager Vauxhall Special Vehicles  
Telephone: 07775 825415

### **Mike Roberts**

Sales Manager South  
Telephone: 07775 825351

### **Perry Clarke**

Sales Manager North  
Telephone: 07940 547775

### **Admin Team**

Telephone: 01525 408320  
Email: [vauxhallspecialvehicles@vauxhall.co.uk](mailto:vauxhallspecialvehicles@vauxhall.co.uk)

# CONTENTS

Welcome	02
Corsa 5-door	04
Astra	05
Ampera	06
New Insignia	07
New Insignia Country Tourer	08
Armoured New Insignia	09
Mokka	10
Antara	11
Combo	12
Combo Fire	13
Combo Dog Unit	14
Vivaro	15
Vivaro Prison Cell	16
Movano	17
Movano Protected Support Unit	18
Mobile Computing/Our Emergency Package	20
Aftersales/Special Vehicle Demonstrators	21
Remarketing	22
Range Fuel Economy and Emissions Data	23



## SPECIAL VEHICLES

# CORSA 5-DOOR\*

### Standard features include:

- Driver's and front passenger's dual-stage airbags
- Anti-lock Braking System (ABS)
- Emergency brake assist
- Full-size matching spare wheel and tyre
- Air conditioning
- Electronic engine deadlock immobiliser
- Speed-sensitive power-assisted steering
- Door-to-door illumination
- Electrically adjustable door mirrors
- Map pockets on front seat backs
- Daytime running lights
- Remote control central deadlocking
- Electrically operated front windows
- Welcome lighting
- Home Office Automotive Conformance (EMC) Specification 6 compliant
- Home Office brake tested



### Optional features include:

- Plus Pack (Driver's seat height adjuster, steering column adjustable for reach and rake)
- Flex-Fix® integrated bike carrier system
- Rear parking distance sensors

### Engine availability

1.3CDTi 16v (75PS) ecoFLEX

### CO<sub>2</sub> (g/km)

112



Police



Fire



Ambulance

\*Emergency model based on S trim.

## SPECIAL VEHICLES

# ASTRA

Hatchback or Sports Tourer\*

### Standard features include:

- Electronic Stability Programme (ESP)
- Six airbags
- 16-inch steel wheels with flush covers
- Full-size matching spare wheel and tyre
- Air conditioning
- 12-volt auxiliary power socket
- Driver's seat height adjuster
- 60/40 split-folding rear seat back
- Electrically operated front windows
- Electrically adjustable heated door mirrors
- Remote control central deadlocking

- Steering column adjustable for reach and rake
- Home Office Automotive Conformance (EMC) Specification 6 compliant
- Home Office brake tested
- CiA447 CAN compliant

### Astra Sports Tourer only:

- 12-volt auxiliary power socket located in luggage compartment
- Retractable luggage compartment cover



*Image shown includes optional Rugged tablet, Central Repeater Screen and additional USB Keyboard.*

### Optional features include:

- Seat Comfort Pack One (Driver's seat with six-way manual adjustment and four-way electrical lumbar adjustment)
- Front and rear parking distance sensors

### Engine availability

	CO <sub>2</sub> (g/km)
1.3CDTi 16v (95PS) ecoFLEX	109
1.6CDTi 16v (110PS) ecoFLEX Start/Stop	97
1.6CDTi 16v (136PS) ecoFLEX Start/Stop	104
1.7CDTi 16v (110PS) ecoFLEX Start/Stop	110-114
1.7CDTi 16v (130PS) ecoFLEX Start/Stop	110-114

\*Emergency model based on Design trim.



Police



Fire



Ambulance



Police



Fire



Ambulance

## SPECIAL VEHICLES

# AMPERA\*

### Standard features include:

- Seven individual airbags
- Leather-trim with electrically heated front seats
- Rear view camera
- Front and rear parking distance sensors
- Electronic Stability Programme (ESP) with traction control and emergency brake assist
- Anti-lock Braking System (ABS)
- CD/MP3 CD player with stereo radio
- Digital radio
- USB connection with iPod control
- Aux-in socket
- Multi-function trip computer
- Hands-free mobile phone system with Bluetooth®
- Electronic climate control
- Cruise control
- Automatic lighting control
- LED daytime running lights
- Electric parking brake
- Electrically operated front and rear windows
- Electrically adjustable/heated door mirrors
- 17-inch five-Y-spoke alloy wheels with aero covers
- Remote control security alarm
- Home Office Automotive Conformance (EMC) Specification 6 compliant
- Home Office brake tested



Fire



Ambulance



Police



Civilian interior illustrated.

### Engine availability

E-FLEX motor and 1.4i 16v VVT ECOTEC

### CO<sub>2</sub> (g/km)

27†

\*Emergency model based on Positiv trim. † = The 'Combined/weighted' fuel consumption/CO<sub>2</sub> figures for Ampera are calculated from two test results: one with the battery fully charged and the other when the battery is discharged. The two test results are a weighted average, taking into account mileage range on battery power only, providing a representative figure in a variety of charge conditions. Extended range is achieved by 14 litre 16-valve VVT ECOTEC® petrol engine generating electricity.

## SPECIAL VEHICLES

# NEW INSIGNIA

Hatchback or Sports Tourer\*

### Standard features include:

- Electronic Stability Programme (ESP)
- Six airbags
- Full-size matching spare wheel and tyre
- Electronic climate control
- 12-volt auxiliary power socket
- Electric height-adjustable driver's seat
- Electric four-way lumbar adjustment on driver's seat
- Automatic lighting control
- 60/40 split-folding rear seat back
- Electrically operated windows
- Electrically adjustable/heated door mirrors
- Remote control security alarm
- Lowered and uprated sports suspension
- Sports pedals
- Front fog lights
- Home Office Automotive Conformance (EMC) Specification 6 compliant
- Home Office brake tested
- CiA447 CAN compliant



Police



Fire



Ambulance



999/At scene dual function, covert single switch

### Optional features include:

- Front passenger's seat comfort pack incorporating six-way manual adjustment with electrical height and four-way lumbar adjustment
- Front and rear parking distance sensors

### Engine availability

	CO <sub>2</sub> (g/km)
2.0CDTi (120PS) ecoFLEX Start/Stop	98-104
2.0CDTi (130PS)	119-124
2.0CDTi (130PS) Automatic	139
2.0CDTi (140PS) ecoFLEX Start/Stop	98-104
2.0CDTi (163PS) ecoFLEX Start/Stop	114-119
2.0CDTi (163PS) Automatic	140-149
2.0CDTi BiTurbo (195PS) Start/Stop	125-129

\*Emergency model based on SRI trim.

## SPECIAL VEHICLES

# NEW INSIGNIA COUNTRY TOURER

### Standard features include:

- Adaptive 4X4
- FlexRide
- Increased ground clearance
- 18-inch diamond-cut bi-colour alloy wheels
- Silver-effect roof rails
- Front fog lights
- Dark-tinted rear windows
- Home Office brake tested
- CiA447 CAN compliant



Fire



Police

### Engine availability

### CO<sub>2</sub> (g/km)

2.0CDTi (163PS) 4X4 Start/Stop

147

2.0CDTi (163PS) 4X4 Automatic

169

2.0CDTi BiTurbo (195PS) 4X4 Automatic

174



## SPECIAL VEHICLES

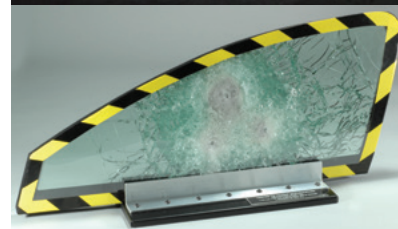
# ARMOURED NEW INSIGNIA

New Insignia Armoured Vehicle offers exceptional levels of protection without compromising its looks, comfort or handling.

### Features include:

- Independently tested to European ballistic standards
- Two levels of ballistic protection available
- Full 360 degree protection with steel and composite materials
- Tested up to VSAG 08
- Home Office brake tested

Protection solution can be installed into any of the New Insignia Hatchback and Sports Tourer model line ups from the Design variant up to the VXR, should a high performance vehicle be required.



*Glass ballistically tested.*



*Rear upstand between passenger and rear load compartments. (Hatchback model shown)*

## SPECIAL VEHICLES

# MOKKA\*

### Standard features include:

- Switchable electronic stability programme
- Traction control
- Descent control system
- Hill start assist
- Anti-lock Braking System
- Six airbags
- Dual-zone electronic climate control
- Multi-function trip computer
- Cruise control
- Remote control alarm system
- Automatic lighting control
- Rain-sensitive windscreen wipers
- Electrically adjustable/heated door mirrors

- Front fog lights
- Front and rear parking distance sensors
- Silver-effect roof rails
- Sterling silver-effect 18-inch alloy wheels with 215/55 R 18 tyres
- Home Office brake tested
- CiA447 CAN compliant
- Home Office Automotive Conformance (EMC) Specification 6 compliant

### 4X4 models also feature:

- Intelligent four-wheel drive



### Engine availability

1.7CDTi 16v (130PS) Start/Stop FWD
1.7CDTi 16v (130PS) Automatic FWD
1.7CDTi 16v (130PS) Start/Stop 4X4

### CO<sub>2</sub> (g/km)

120
139
129



Police



Fire



Ambulance

\*Emergency model based on Exclusiv trim.

## SPECIAL VEHICLES

# ANTARA\*

### Standard features include:

- Electronic Stability Programme
- Anti-lock Braking System
- Descent control system
- Hill start assist
- Six airbags
- 18-inch alloy wheels
- Full-size matching spare wheel and tyre
- Air conditioning
- Electrically heated front seats
- Steering column adjustable for reach and rake
- Front fog lights
- Dark-tinted glass (excludes windscreen and front door windows)
- Silver-effect roof rails
- Automatic self-levelling rear suspension
- Electrically adjustable/heated door mirrors
- Electric parking brake
- Remote control alarm system
- Trip computer and Graphic Information Display
- Cruise control
- Traction control
- Parking distance sensors front and rear
- Home Office Automotive Conformance (EMC) Specification 6 compliant
- Home Office brake tested



### Engine availability

### CO<sub>2</sub> (g/km)

2.2CDTi 16v (163PS) 4X4 Start/Stop

177

2.2CDTi 16v (163PS) 4X4 Automatic

225



Police



Fire



Ambulance

\*Emergency model based on Exclusiv trim.

## SPECIAL VEHICLES

# COMBO

Available in Van or Crew van body styles with a range of load lengths and roof heights.

### Standard features include:

- Anti-lock Braking System with electronic brakeforce distribution
- Driver's airbag
- Seatbelt pretensioner system
- Remote control central deadlocking
- Lockable fuel filler cap
- Electronic engine deadlock immobiliser
- Lockable glovebox
- Reach and rake-adjustable steering column
- Reach and rake-adjustable front seats
- Electrically operated front windows
- Unglazed asymmetric rear doors
- Full-height steel bulkhead
- Load restraint lashing eyes
- Illuminated load area
- Home Office Automotive Conformance (EMC) Specification 6 compliant
- Home Office brake tested
- Payloads available from 750-1000kg



Police



Ambulance

### Engine availability

### CO<sub>2</sub> (g/km)

1.3CDTi 16v (90PS)	136-133
1.3CDTi 16v (90PS) ecoFLEX Start/Stop	129-126
1.6CDTi 16v (105PS) Start/Stop	146-136
1.6CDTi 16v (90PS) Start/Stop Tecshift	145-130
2.0CDTi 16v (135PS)	158

## SPECIAL VEHICLES

# COMBO FIRE

Available in Van or Crew van body styles with a range of load lengths and roof heights.

### Standard features include:

- Anti-lock Braking System with electronic brakeforce distribution
- Driver's airbag
- Seatbelt pretensioner system
- Remote control central deadlocking
- Lockable fuel filler cap
- Electronic engine deadlock immobiliser
- Lockable glovebox
- Reach and rake-adjustable steering column
- Reach and rake-adjustable front seats
- Electrically operated front windows
- Unglazed asymmetric rear doors
- Rear seat with 'fold and tumble' and 60/40 split seat back and cushion
- Load restraint lashing eyes
- Illuminated load area
- Home Office Automotive Conformance (EMC) Specification 6 compliant
- Home Office brake tested
- 800kg payload



Fire



# COMBO DOG UNIT

The Combo Dog Unit has been developed to accommodate two dogs while meeting stringent DEFRA standards.

## Standard features include:

- Double dog compartment manufactured from 6mm white polypropylene, 940mm high x 600mm wide x 1100mm deep conforming to DEFRA requirements
- Fitted with removable central divide and heavy-duty rubber matting to the floor
- Sealed and fitted with drainage plugs to allow waste water to be drained during cleaning
- 5L water bottle holder
- Two stainless steel gates constructed with vertical bars to prevent claw and paw damage with lockable latches
- Rear escape hatches, with sliding laminated glazed panels
- Supplementary lighting and ventilation (incorporating air conditioning) all controlled from the vehicle cab area
- Multiple storage areas designed to separately store dry and wet equipment

## Optional features include:

- Temperature monitoring
- Thermostatic control (requires temperature monitoring)
- Hand wash facility



## SPECIAL VEHICLES

# VIVARO

Available in a range of load lengths and roof heights.

### Standard features include:

- Electrically operated front windows
- 12-volt electrical accessory socket
- Driver's airbag
- ABS with emergency brake assist
- Remote control central deadlocking
- Electronic engine deadlock immobiliser
- Dual front passengers' bench seat
- Six-way adjustable driver's seat
- Steering column adjustable for reach
- Illuminated glovebox
- Facia-mounted gear lever
- Home Office Automotive Conformance (EMC) Specification 6 compliant
- Home Office brake tested
- Payloads available from 1053-1254kg



### Engine availability

### CO<sub>2</sub> (g/km)

2.0CDTi 16v (90PS) ecoFLEX with/without speed limiter	180-174
2.0 CDTi 16v (115PS) ecoFLEX with/without speed limiter	180-174
2.0CDTi 16v (115PS) Tecshift	202-199



Police

Fire

Ambulance

## SPECIAL VEHICLES

# VIVARO PRISON CELL

Our prison cell vehicle has been specifically designed for our Vivaro van model, allowing the fitment of a two person cell unit along with twin additional rear-facing seats to allow the monitoring of cell occupants.

### Standard features include:

- Two-person prison cell fully sealed with perspex inserts to allow for floor to ceiling visibility of occupants
- Full-height emergency exit door opening into the rear passenger compartment
- Cell finished in white to aid cleaning
- Cell compliant to OEM EC17 luggage retention (50kph) crash test
- Supplementary cell lighting and ventilation all controlled from the vehicle cab area
- Two additional rear facing seats, M1 standard
- Storage box fitted between the rear seats and the cab area
- Hi-visibility edging for vehicle side doors

### Optional features include:

- Internal and external visual and audio recording for cell





## SPECIAL VEHICLES

# MOVANO

Available in a range of load lengths and roof heights.

### Standard features include:

- Six-way adjustable driver's seat
- Driver's seat armrest
- Dual front passengers' bench seat
- Electrically operated front windows
- Twin overhead storage shelves
- 11-litre lidded glovebox
- Driver's airbag
- Remote control selective door locking with three-button key with deadlocks
- Electronic engine deadlock immobiliser
- High-level brake light
- Home Office Automotive Conformance (EMC) Specification 6 compliant
- Home Office brake tested
- ACPO ITS Single Vehicle Architecture compliant
- Payloads available from 966-2254kg



### Engine availability

Engine availability	CO <sub>2</sub> (g/km)
2.3CDTI 16v (125PS) Start/Stop ecoFLEX	240-199
2.3CDTI 16v (125PS)	232-205
2.3CDTI 16v (125PS) Tecshift	249-206
2.3CDTI 16v (146PS)	232-223



Fire



Ambulance HDU



Police PSU

# MOVANO PROTECTED SUPPORT UNIT

Built around the award-winning Movano, our PSU (Protected Support Unit) is strong and versatile. It's unique, modular design can be adapted to suit any operational situation. An extensive range of options lets you tailor the vehicle to meet your exact requirements.

## Standard features include:

- Fully modular floor tracking system with M1 certified mounting points
- O/S overhead storage shelf incorporating individually switchable lighting
- Additional interior white and red lighting, for low light level adaption prior to deployment
- 11.5mm 5-ply 'anti-bandit' windscreen with anti-spall film and high strength steel mesh drop guard operated from the vehicle cab
- Polycarbonate load area glazing fitted with contravision material to prevent viewing into the vehicle
- Spray-on interior lining for the load area for 360° protection with half-height polycarbonate panels for added protection
- Tyron® run-flat tyre bands
- Powder coated steel guards for the vehicle radiator and engine underside
- Secondary battery with split-charging facility



### Optional features include:

- Climate control incorporating air-conditioning and heating
- Information/entertainment monitor
- Additional control panel to operate auxiliary equipment from the load area as well as the cab
- 240V inverter for appliances and multiple 12V auxiliary sockets for varying equipment
- Single and double width, fixed or foldable tables
- Choice of single or 2-person prison cell incorporating supplementary cell lighting and ventilation all controlled from the vehicle load area (Cell compliant to OEM EC17 luggage retention (56kph) crash test)
- Choice of ready developed rear solutions including storage for both Armadillo and round shields as well as kit bags or bespoke solutions with mounting points for various OEM equipment
- Additional door catch for side loading door
- Additional check straps for cab and rear, hinged doors
- Roof protection (tested to withstand a 44kg tetrahedron weight dropped from a height of 2.8m)
- Additional head lamp and tail lamp poly carbonate protection
- Fire suppression system for engine bay operated from cab
- Sprung loaded bolts for access doors for added security



Police PSU

# MOBILE COMPUTING

Our bespoke data/communications systems provide a discreet solution to MDT (Mobile Data Terminal) product storage, with sensitive equipment stored safely and securely in the vehicle glovebox.

This allows officers to record information at the scene of an incident, reducing the need to return to central office in order to file reports.

## Standard features include:

- Choice of Rugged laptop or Rugged tablet notebook
- Specially designed docking solution fitted in the glovebox
- Integrated WLAN (WiFi/3G/4G) and Bluetooth® to allow for access and data transfer
- Long battery life for mobility with continuous charging when docked and the vehicle is in use
- USB ports for external device plug and play

## Optional features include:

- Centrally integrated 8.4-inch repeater screen, graphic or touch sensitive
- Additional USB rugged keyboard mounted in the passenger footwell

## Terrafix® TVC 3000

- Specially developed along with the Vauxhall New Insignia for Ambulance fleet RRVs.



# OUR EMERGENCY PACKAGE

## Technology

Our vehicles are geared towards the latest directives for emergency vehicles. We were the first to develop an SVA (Single Vehicle Architecture) model – New Insignia – and the latest stage of our Astra development is fully compliant with the CiA447 protocol, another **industry first**.



ASSOCIATION OF  
CHIEF POLICE OFFICERS

## Duty of Care

All components are rigorously tested to ensure they meet the highest standards of occupant and pedestrian protection. Equipment within the head impact area is designed in line with the theoretical 'H-point' principle, enhancing visibility and comfort while eliminating the possibility of items intruding in to the occupant's area in the event of a collision.



### **Economy**

Our one-stop shop supply solution eliminates the need for unnecessary on-costs, such as additional vehicle movements to auxiliary equipment suppliers.

### **Quality**

Wherever possible, all components are designed, tested and manufactured using our own in-house facilities and workforce. Parts sourced from third-party suppliers are purchased by GM and meet stringent OEM (Original Equipment Manufacturer) standards of safety and quality.

### **Remarketing**

All equipment fitted is designed to have as little impact on the vehicle as possible, promoting ease of decommissioning and ensuring the highest resale value. This has the added benefit of prolonging the life of the vehicle (see page 22 for more details).

## **AFTERSALES SUPPORT**

At Vauxhall Special Vehicles we recognise the importance of keeping your fleet running at all times and getting vehicles that have been taken out of service back on the road as soon as possible. For this reason aftersales and technical support is critical.

Vauxhall have two dedicated Northern and Southern Corporate Customer Care Managers, who work alongside a specially trained Technical Assistance Manager, to help support your fleet.

We have also worked to utilise Vauxhall's extensive dealer network to help support you when a vehicle is off the road. We have a special

training curriculum run from the GM Academy in Luton specifically to help dealer technicians receive comprehensive training for Bluelight equipment, as well as a special Service Level Agreement that a number of dealers have signed up to.

Replacement parts ordering is also accounted for with a special process for ordering both base vehicle and bluelight parts to ensure that new items are turned around as efficiently as possible.

All this helps to ensure vehicle repairs are dealt with in a professional and timely manner while maintaining the highest standards of workmanship and vehicle security whilst the vehicle is in our care.

For maintenance and upkeep that you may wish to carry out in your own dedicated workshops we offer a range of workshop manuals and wiring diagrams to assist you in diagnosing and repairing your vehicles.

## **SPECIAL VEHICLE DEMONSTRATORS**

As well as our dedicated fleet of civilian demonstrator vehicles, which can be used to test and evaluate the base vehicle, Vauxhall Special Vehicles also offers a range of bluelight demonstrators for assessing the vehicles under operational conditions.

To confirm the availability of vehicles and to book your demos please contact your regional sales manager or the Vauxhall Special Vehicles administration team for further details.

Please note all demonstrators are offered for resale after approximately six months service and can be reserved for future purchase.

# REMARKETING

## A first for emergency vehicles

We recognise that Fleet Managers are under increasing pressure to maximise efficiency and reduce the cost of sourcing vehicles. The decommissioning and remarketing of such vehicles can exert a particular drain on resources.

Our new Vehicle Remarketing Service can be tailored to your individual requirements, reducing your administrative burden while promoting the reuse of high value vehicle equipment.

### The process typically works like this:

- Fleet Manager contacts VSV advising vehicle ID to remarket
- VSV arranges collection and transports to decommissioning centre
- MoT and service carried out (if required)
- Unwanted parts removed and agreed items held for reuse or returned
- Repairs carried out, vehicle prepared for auction
- Vehicle auctioned
- Financial administration concluded

As well as providing a choice of options when it comes to preparing the vehicle for resale, we also offer a range of flexible administration and financial solutions. These can include the Fleet Manager retaining all existing administration duties and receiving the resale proceeds from auction or, alternatively, minimising direct involvement, with the resale proceeds used to discount the cost of new vehicles.

To discuss the options in more detail please speak to your Vauxhall Special Vehicles Sales Manager.



# THE FACTS

## Range Details: Fuel economy and emissions data

Official Government Environmental Data. Fuel consumption figures mpg (litres/100km) and CO<sub>2</sub> emissions.

Model	CO <sub>2</sub> (g/km)	Urban MPG (litres/100km)	Extra Urban MPG (litres/100km)	Combined MPG (litres/100km)
Corsa 5-door	112	53.3 (5.3)	78.5 (3.6)	67.3 (4.2)
Astra Hatchback and Sports Tourer	114 - 97	56.5 (5.0) - 72.4 (3.9)	72.4 (3.9) - 80.7 (3.5)	65.7 (4.3) - 76.3 (3.7)
Ampera	27 <sup>†</sup>	N/A	N/A	235.4 (1.2) <sup>†</sup>
New Insignia Hatchback and Sports Tourer	149 - 98	37.7 (7.5) - 62.8 (4.5)	62.8 (4.5) - 88.3 (3.2)	50.4 (5.6) - 76.3 (3.7)
Mokka	139 - 120	44.1 (6.4) - 52.3 (5.4)	61.4 (4.6) - 70.6 (4.0)	53.3 (5.3) - 62.8 (4.5)
Antara	225 - 177	25.2 (11.2) - 34.4 (8.2)	39.8 (7.1) - 48.7 (5.8)	33.2 (8.5) - 42.2 (6.7)
Combo	158 - 126	42.8 (6.6) - 51.4 (5.5)	38.7 (7.3) - 67.3 (4.2)	50.4 (5.6) - 58.9 (4.8)
Vivaro	207 - 174	30.7 (9.2) - 35.8 (7.9)	38.2 (7.4) - 49.5 (5.7)	35.8 (7.9) - 37.7 (7.5)
Movano	249 - 205	26.6 (10.6) - 33.6 (8.4)	32.5 (8.7) - 40.4 (7.0)	30.1 (9.4) - 37.2 (7.6)

Official Government Test Environmental Data. Official EU-regulated test data is provided for comparison purposes and actual performance will depend on driving style, road conditions and other non-technical factors.

<sup>†</sup> = The "Combined/weighted" fuel consumption/CO<sub>2</sub> figures for Ampera are calculated from two test results; one with the battery fully charged and the other when the battery is discharged. The two test results are a weighted average, taking into account mileage range on battery power only, providing a representative figure in a variety of charge conditions. Extended range is achieved by 1.4 litre 16-valve VVT ECOTEC<sup>®</sup> petrol engine generating electricity.

## Demo Vehicles

We have a range of Special Vehicles, suitably-liveried, which can be made available for assessment purposes under operational conditions.

In addition we have an extensive demonstration fleet of civilian cars and vans available to test drive.

**To confirm availability and book your Demo vehicle please call 01525 408320.**

**Please note that our Demo vehicles are usually offered for sale when they have been in service for six months.**

## Vauxhall Lifetime Warranty

We're so confident in Vauxhall quality and reliability that we are now able to offer a lifetime warranty. Available to the first owner of all new Vauxhall passenger cars, it's valid for the lifetime of the vehicle up to a maximum of 100,000 miles†. In addition, our warranty also includes Vauxhall Assistance for 12 months from first registration and six years body panel anti-perforation warranty. Full details of Vauxhall's warranties including terms, conditions and exclusions can be obtained through any authorised Vauxhall retailer or go to: [www.vauxhall.co.uk/warranty](http://www.vauxhall.co.uk/warranty)



## Vauxhall Special Vehicles contacts

### Dick Ellam

Manager Vauxhall Special Vehicles  
Telephone: 07775 825415

### Perry Clarke

Sales Manager North  
Telephone: 07940 547775

### Mike Roberts

Sales Manager South  
Telephone: 07775 825351

### Admin Team

Telephone: 01525 408320  
[vauxhallspecialvehicles@vauxhall.co.uk](mailto:vauxhallspecialvehicles@vauxhall.co.uk)

† = Lifetime Warranty covers lifetime ownership of first car owner, 100,000 mile limit. (eight-year 100,000 mile warranty on the Ampera battery subject to the warranty conditions as outlined in the Vauxhall Ampera service booklet). Annual check required. The warranty excludes wear and tear and serviceable items and the vehicle must be serviced in accordance with the manufacturer's servicing schedule to continue the Lifetime Warranty. Terms and conditions apply. Offer available to all Vauxhall passenger cars, (this offer does not apply to car-derived vans) registered from March 2014.



**VAUXHALL**